

VRG\_Folder - 0571

Attic? Amphoras



P 9429 (Kant 4)  
249  
P 21970 (Sutton)

a deposit U 13 : 1 (see DEPOSITS I for whole wing classes:

para-CHIAN  
group of ZEEST TYPE 19  
wide-mouthed Jars

HASIAN  
AMIAN

Attic (?) class, tentatively so identified an early stage to the early Panathenaic no. 147, whole jar, cf. pl. 39. These are

...ly on the bottom, and a heavy sharp-edged rim, the rim top of which is at first nearly horizontal, but by the end of the 5th century has started to slope down outward making a mushroom effect. Jars restored complete, PP<sup>1</sup> 728, 729. Other pieces were catalogued to show dipinti, range of dimensions and of ~~xxxx~~ style, range of clay. Variations in this latter are considerable, and perhaps suggest jars made to a type but in various places. For range of dimensions and style, PP<sup>1</sup> 728 and 729 are to be compared with the earlier PP<sup>1</sup> 723 (neck only) which is partly at least from the earlier level at the bottom of the well. In 723 the height of the handles is about 2 cm. less than in 728 and 729; and the outer edge of the rim of 723 is high, so that the top of the rim is nearly horizontal, whereas in the other two the rim has a mushroom slope, such as is shown at a still later stage in the right-hand jar in Amphoras, fig. 42.

Attic? Amphoras



p 21970 (Boulton)



Eleusis  
Jan



p 9429 (last 1/4)

387.15A (or 16A)

Comment of 27.VIII.74 on Agora deposit U 13 : 1 (see DEPOSITS I for whole text) contains notes on the following classes:

MENDEAN

para-CHIAN

ATTIC

group of ZEST TYPE 19

CHIAN

Wide-mouthed Jars

CORINTHIAN

THASIAN

LESBIAN

SAMIAN

Also numerous in U 13 : 1 is the Attic (?) class, tentatively so identified in 1953 because of its resemblance at an early stage to the early Panathenaic amphora. See Hesp. 22, pp. 101-102, no. 147, whole jar, cf. pl. 39. These are

- 2 -

jars with full body, ring foot directly on the bottom, and a heavy sharp-edged rim, the flat top of which is at first nearly horizontal, but by the end of the 5th century has started to slope down outward making a mushroom effect. Jars restored complete, PP<sup>1</sup> 728, 729. Other pieces were catalogued to show dipinti, range of dimensions and of ~~xxxx~~ style, range of clay. Variations in this latter are considerable, and perhaps suggest jars made to a type but in various places. For range of dimensions and style, PP<sup>1</sup> 728 and 729 are to be compared with the earlier PP<sup>1</sup> 723 (neck only) which is partly at least from the earlier level at the bottom of the well. In 723 the height of the handles is about 2 cm. less than in 728 and 729; and the outer edge of the rim of 723 is high, so that the top of the rim is nearly horizontal, whereas in the other two the rim has a mushroom slope, such as is shown at a still later stage in the right-hand jar in Amphoras, fig. 42.

# ATTIC

From Fred, 13.V.74

For golden jar (P 12760)

Panathenais of Kleophrades  
see Dewel. of Attic B.F.

"still some affinity to them"

Attie jars

Today went through this file with  
Mae Wallace <sup>chief</sup> for notes on Panathrenian  
 capacities. Went through the "Plain Attie"  
 card file also, and noted capacities later.

Published Note on *Altunia* jaws stamped  
with coin types  
and a gem impression (SS8404)

See Hesperia XL, 1971, p. 81, with notes 74 and  
75 ("Sardin Amphoras"). The gem impression  
(Lang & Crosby pl. 18, LM 28 = SS8404) is contrasted  
with the coin-type dies; also the handles and  
what can be known about the jaws that bear the  
1) the gem impression and 2) the coin types -

See attached note of 1969

23. IV. 78

See now Gems article (on Blundell's  
"Excavations Amph. Ship" (patrolship))



additional ~~Other~~ SAH  
not in Lang

P 27368-9 ME  
- check content

both 2.VII.65

Both for "Stoa crosscut, Piers 1/2,  
south aisle, behind stoness near  
Pier 2; content of 4th and B.C.  
n.b. p. 1908 → ["pithy to a mid-4th"]

On P 27369; "although found with  
P 27368, — prob. for a diff. vessel  
on — it is markedly diff in shape  
and has no point."

Pier 2 is appxly <sup>Pier</sup> west end  
(as "A" is also "22 for East")  
i.e. near Tholos

Mr. Benavides pointed out (for P 27368)  
that a special blob of clay has been  
placed where stamp was to be impressed.  
(Not noted in n.b. or cat. card.)

Attian amphoras - liquid measures

[1964]  
See Agora X, pp. 58 ff.

Fraggs. belong to:

by context, 5th BC

a.) White-on-black (H. glaze w. white band) on which letter

by context & coin type 4th BC

b.) Plain, with <sup>shoulder be</sup> <sup>velvety</sup> Attian head <sup>(? post.)</sup> or owl  
Thin lines bet. neck-body

(probably LM 20 earlier - mid 5th context (see p. 60))

c.) Plain handles w. coin-type stamps  
[No context for SAH with these coin types  
See next page.]  
However, for dry measure with these types there is.

Reconstruction of these amphoras:  
only small pieces exist

For (a) on grain known, which one says under it Beazley amphora type B, and thinks it might look like Healy, 1953, pl. 21 or Healy 1938, p. 345, fig. 28, 12-<sup>perhaps</sup> disc jars  
[Note to Healy, amph., has "the broad glaze" or "white glaze"]

For (b), notes a ridge between neck-body, & comparatively narrow neck. might be compared with Panthenon <sup>in ground</sup> (p. 59). She thinks decorated <sup>(very fine)</sup> w. a measure was Attian head on one side and owl on other, both large signs, and ins. SHMO (p. 1) 510N

For (c), one imagines that each amphibia  
 had its 2 handles stamped <sup>with</sup> into one of  
 its 2 types, out - Alum band, and  
 very likely the jaw had Alum band  
 and out as hypothesized above  
 for (b). See also handles now  
 fused interior of jaw.


More than 80% of frags. come from Tholos  
 area.

<The stamped handles do not look at  
 all like handles of 4<sup>th</sup> and, Pantheonian>

24.11.69

Context M.C. sites for SAH:

a number bear vaguely "5<sup>th</sup> - 4<sup>th</sup> and 5 BC?"  
 - not closed deposits.

LM 27 - SS 7804 - is for "10+3  
 Alum band  
 Alum. coin type  Seal help of 4<sup>th</sup> AD

LM 28 - SS 8404 - is for "0 22:1 <sup>copies</sup>  
 EE, coin at 31/ka (modern SAH)  
 3/4 of 4<sup>th</sup> "  
 jaw - Alum in  
 context of 4<sup>th</sup> AD  
 Age RT: coin 360-525 B.C.

12.11.69

and into post-Lamy  
 SAH, P 35368-91  
 one said to have  
 context "5<sup>th</sup> AD"  
 mid-4<sup>th</sup> AD with MS  
 (P. 1908)

That's all.

But dry measures with coin input are dated by context:

DM 44 (P 3559) F 11:2, 2/24<sup>th</sup> C.  
 45 (P 3562) " " " " " "

(B Well at 15/11)  
 SS 2618, tower

Stamped frags. of Athenian measures

New details of the impression of actual size were  
for M. Lang's (book) taken in 1960, and contacts ~~was~~ been made for use,  
of the following items:



Note these are just to SS items, and  
they are all on branches.

Indexing plans:

SS 1420 2, LR fill

3299 B, late mixed fill

6593 } B, Boultonia Plateia, NW

6594 } part, 2nd layer down, based;  
p. 2172.

7804  $\pi\theta$ , Wall of 28/MH (L.R.)

8404 EE, int. at 31/KA, Box 7  
(O 22:1 3/4 45")

7.02a

7.01

13. XII. 65

Note that most of these  
objects have now been  
published by M. Lang

4th 1933.

Agona Vol. X [1964]

[16. X. 68

See Agona X, pp.

55-61.]

1 cent

give 1

see the

for

con.

The thing in the  
National Museum is a clay  
metron

nearly cylindrical, no.  
2418, from Athens,  
renewed, the clay  
yellowish,  
surface frie, and

it 'remembers' roughly  
like your fragment.

Inscribed in black

9. IX. 75

Note other items are on

file w/ foliate under  
"Miscellaneous Assigned"  
Athenian  
(card file)

7.01

13. XII. 65

Note that most of these  
objects have now been  
published by M. Lang

in Agnes Vol. X [1964]

[16. XII. 68

See Agnes X, pp.

58-61.]

100 Holywell,  
Oxford.

November 4th 1933.

Dear Miss Grace

I don't think I sent  
you the Black-figure I  
promised you to replace the  
copy you described. You  
will receive it soon.

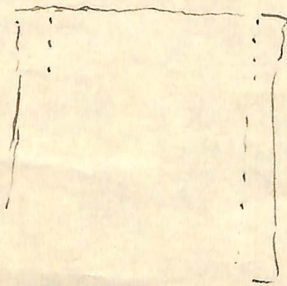
The thing in the  
National Museum is a clay

metron

nearly cylindrical, no.  
2418, from Athens,  
reserved, the clay  
surface fine, <sup>yellowish,</sup> and

it 'remembers' roughly  
like your fragment.

Inscribed in black



letters very like yours, all  
round the middle

$\Delta H M O \Sigma [10] N$ . The eta is

fragmentary, of the mu only a  
trace remains. Besides, two

coin-like stamps: — one ~~on~~ two

owls conjoined in head, the

other (set in the middle of the

omission), a head of Athena 'new'

type. Reserved inside.

I didn't measure the height or  
content.

Ulasto dated the coin-  
types for me, but unfortunately

I have mislaid his sheet. When

I find it I will send it. (

think he put the coins in the

early part of the fourth century.

With best wishes from us both.

Yours sincerely, J. D. Beazley.

7.03a



POST CARD



91  
95

Rad

Miss Virginia Grace

Boys Mower College

Boys Mower

Pennsylvania.

United States of America.



cc

## Athenian stamps

The style of the Athena impression [7.03b] is more like the AR drachms struck before c. 407 BC. as tetradrachms after 393 to 339 are roughly engraved and are only imitations of older coins.

The double-bodied owl impression is first found on AR diobols struck between 393 and 339 - This type is however also found on AE struck after 339.

Both impressions are of unusually fine style as one would expect from a seal would be the case for an official seal.

I would suggest the first half of the iv cent as their probably date."

Plasto on the impressions on the Metron.

Stamped frags. of *Athena* medallions

New details of the impression at actual size were  
(for M. Lang's book) taken in 1960, and contacts ~~have~~ been made for use,  
of the following items:



SS 1420



SS 3299

Note these are just the SS items, and they are all on chandeliers.

Finding places:

SS 1420 Z, LR fill

3299 B, bits mixed fill

6593 } B, Boulton Plateia, NW  
6594 } part, 2nd layer down, (adial, p. 2172.

7804 πθ, Wall of 23/114 (L.R.)

8404 EE, int. of 31/KA, Box 7 (ö 22:1 3/445)



SS 6593



SS 6594



SS 7804



SS 8404

9. IX. 75

Note other items are on file w/ folders under "Miscellaneous Assignments" (card files) *Athena*

Objects stored in 2 drawers labelled  
"Public Pots", with other frags. leaving  
printed marks (inscriptions etc.)

Measurements on frags, with Athenian stamps

card out		<sup>type</sup> head of Athena	light or dark
" "	SS 1420	head of Athena	L
" "	3299	double-headed owl	L
	6593	owl	L
	6594	owl	L
	7804	head	L
φ	8404	<u>non-typical</u> helmeted head of Athena (L)	
	<del>27368</del>		
	27369		
Where are these cards?)	P 496	head	D
	3497	head	D
	3559	head <u>and</u> owl	(measure <sup>D</sup> or display?)
	5898	owl	D
	5909	head	L?
	5910	owl	L?
	10722	owl	D
	23134	owl	D
	23419	head	D
13. VII. 6)	27368	"	L
" " "	27369	"	L

Lists from 1.) old inscriptions cards and 2.) Public Pots drawers.

See if there are more in exhibition - or elsewhere? When would  
large frags be?



depicted  
amphoras on Athenian weights

In Agora X, p. 28 etc; pls. 5, 6.

Note that there are stamps on the shoulder  
of these depicted amphoras. On the stamps,  
see M.L. p. 22.

M.L. assigns 4<sup>th</sup> cent. i

has "Early Panathenai Type I"	}	LW 20, 21 (pl. 5)	}	[See 945 mt. based on content of Ag. 21: 250-210 F 16:1 (Denier and the "content" of a Pnyx pas- sage to LW 20, but it is a "random find")]
" "		" 26, 27 " 6 (half jar)		

and later? 4<sup>th</sup> cent. (content of 340-310 BC) [HAT group 4]

has "Early Panath.  
Type II" LW 25, 29 (pl. 6) (half jar)

27 is  
good

(The wts with half-jar are about half  
wt. of those with whole jar.)

I am working out series of amphora shapes.  
She uses them on coins only, and not the  
actual Panath. amphoras. This means  
a big gap, between "ca. 590 BC" (Waffenmeyer)  
and "ca. 180 BC" (New Style)

She has no <sup>study</sup> ref. really for the Type I or II  
on the amphora shape, see her p. 8.  
She does more or less (indirectly) refer to the  
Waffenmeyer amphora.

O I L  
ATHENIAN  
SAMIAN  
MILESIAIAN

26.X.68

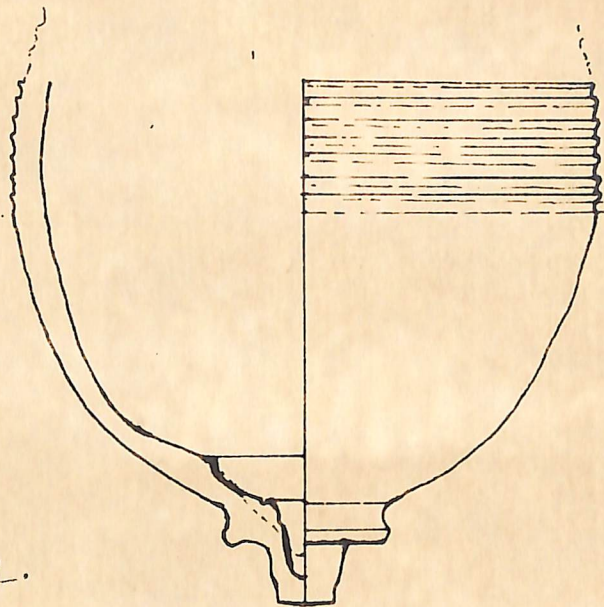
Cargoes of oil

See L. Casson, "The Size of Ancient Merchant Ships," in Studi in Onore di Aristide Calderini e Roberto Paribeni, Vol. I, pp. 231-238. (Milano-Varesi 1956)

p.235: Note 15: "Evidence that confirms these figures is provided indirectly by another inscription, IG II<sup>2</sup> 903 (176/5 B.C.) which honors a man who loaded 1500 metretae of olive oil intending to sell it abroad and bring back a cargo of grain to the Peiraeus but returned with his original load when he learned of a scarcity of oil at Athens. etc."

p.236 (part of same note): "The papyrus PCairoZen 59015 (259 B.C.) lists the contents of the cargoes of three vessels with gratifying detail. The ships were all engaged in carrying oil from Samos or Miletus to Alexandria and we are told just how many jars each carried, the size of the jars [i.e. jars or half-jars?], and the freight paid thereon. The document is one of the very few pieces of evidence for freight rates that have come down to us and accordingly it has often been cited; . . . (references) . . . Yet its evidence should be treated with the greatest caution. These three ships were not regular freighters; two were lembi and one a keles, i.e. fast oar-driven craft that were relatively small, built for speed and maneuverability and not to carry cargo. The heaviest laden held no more than 27 tons or so (258 50-litre and 102 25-litre jars containing 412 metretae) while the smallest carried but 14 odd (145 50-litre and 35 25-litre jars containing 213 metretae)."  
Must check to see whether all of these figures depend on mistaken assumptions, i.e. what the papyrus really says.

BRITISH MUSEUM  
EXHIBITION  
1958  
1000



← Clinker adheres at this point.

Angle of wall above point  
where grooving begins  
and the exact measurements  
of the internal profile of  
base are uncertain.

1/2.

KERAMEIKOS.

1 waster drawn (restored)

3 similar fused with batch of lamps of ? Mid IV<sup>th</sup> date.

Many similar in normal condition in Pompeienschott debris  
TOES.

[From J. H. Hayes]

This shape, formerly <sup>⊗</sup> called tentatively late late  
Keridion, was evidently — see above — made in  
Athens.

⊗ of P. Bk. 6, fig. 66

24.10.63 It may just to save error be called a keridion.

Athenia ? OD ? jars

799 -  
982 -

12:1

As HAT requests I look at the big jars in the 3rd quarter of O, quarters well at 89-90/14-18  
7th cent. well, to see for how many shall be returned - do they show differences - I look up previous finds of this sort, and RSY's account in Suppl. II (pp. 210 ff., and earlier text under the individual pots, for 11s).

The previous finds, fairly complete, I get from looking at the shelves:

3 jars diff  
to others?

P 4599 = Suppl. II, II, 1 p. 22, fig. 8; p. 226, fig. 144.

Called on and early 6th century

P 7185 Suppl. II, C 127, p. 178, fig. 128

P 12594 E, well at 8/14-18, Basket 3

On Kardos: "2nd - 3rd quarter 7th" "G. Hesp. VII 1939 p. 212"

P 17400 OD 3rd century well below east part of Odeion Cavea; p. 494.

Dating features pointed out by RSY p. 211: Beginning, see sup, ca. 700

Prod. outlined by E. Braun very ex. has v. plump body, high, almost vertical ring foot,  
ms. p. 79, under F.40:  
very ex. 5 upright, deep bodies, cylind. short straight neck w. raised ring below lip.

neck w. ring & high vert. Body becomes slimmer and more pointed below, foot more  
flat. In 2nd 1/2 of cent., flaring, neck slightly concave. Samian  
"grows lunched with high shoulder, curved neck and after middle of cent,  
shaped foot." neck ring disappears.

cent., neck ring lost, form more predominant, foreshadowing the banded amph. series of the 6th c.  
(Hesp. 1938, p. 378, fig. 14, no 9). Older coin straggled well into 6th (Cor. 93, Agon P 1594)



It will clearly be desirable to make a real study of these various series referred in a sch. comparison way by PSY. See what connection with the late "heavy-mineral" series.

In the meanwhile, look at jars in O well.

1.) Dimensions of the repaired jar:

.658 (u.b.)

.497 (cond)  
.457 (u. b.)

HT .655 diam. ca. .49

W. of jar

.227 (u. b.)

height of jar - of cavity to small

lip

.232

(at outermost curve, and

as width

between the handles - is

oval, but not pushed together

by handles)

Add from Braun no.,

under F 40:

lip front to back .22

" Bibliog. of the much-discussed

neck " " " .156

Alta oil jar is given in Dolan,

Ht of neck + rim together ca. .118

p. 101. To the distribution list, add

Ht of handles ca. .094

diam. of foot .177

Al Mina (JHS IX, 1940, *Painting* ring just below lip - Handle with encroaching ovid. somewhat thick lip (i.e. not exactly thin)

p. 19 (fig. 8c) and

Foot a heavy flaring ring, the curve of the body

Corinth (under Cor. 93).

is below, set off on outside from body, which

flares very slightly toward it.

Wares glaze over body, and foot, and under foot;

narrow reserve bands on shoulder. Pair of double

concentric circles on each either side.

Quills, seems to be unglazed; eaten away, especially

under shoulder. Andrew says this is oil

higher still!

erosion - eating not on lower parts?

- (1) Warm buff clay, sh. greyish in middle of thick pieces (such as rim); porous, with red (pottery?) bits. Glaze brown, partly dark.

Beginning of end as on long table -

- 2) Neck almost complete, on handle complete, of very similar jar (dimensions very close, also has 2 double circles each side) found more red, <sup>many fine</sup> large parts of shoulder-body; no foot

- \* 3) Parts of neck of smaller jar, dec.  $\text{⋔} \text{⊙} \text{⋔}$   
neck front & back .17

Ht of neck - rim ca. .092

Neck decar. as on P 17, 480, which shows base rim diam of "0.225"

- 4) Foot and large top of body. Diam of foot .187

No interior "oil erosion"

- 5.) Frag. incl. part of foot, part of neck, rim. Conc.  $\text{⊙}$ , and  $\text{⋔}$

- \* 6) Neck, both handles, and much of shoulder, repeating

2 pairs of concentric circles with sides, dots in centers.

across rim .23

PH 0.405 (no. 6)

(front & back not pres.) (but same sort of oval as with 1, 2)

.123

Ht of neck ca. .124

front & back of neck .159

.492 (no. 6)

std diam of body ca. .48

HH ca. 15

at base of rim <sup>separate</sup> not a raised line, but a marked offset from top of neck.

The glaze is well pres., shows dec. better than on (1) - reserved shoulder lines, etc.

interior, either as no "oil erosion"

P 22734  
(0 955)

F 42

\* 7.) Top of larger jar, 3 sets of @ on either side of neck  
 P 22735  
 (0 956)  
 rim at outlet of neck .251 x .246  
 neck from 5 inches .191  
 F 41 Ht of neck ca. .12 P H 0.341 (n.b.)

" " handle ca. 11 (via n.b.)  
 diam. of body ca. .514  
 scratched on base of one handle E. Braun,

Raised ring at base of rim. under F 41,

with "oil rim"

gives a no. of refs. for  
 graffiti on storage amphora,  
 sword for Italy or Sicily.

\* 8.) neck and handles, four frags. of smaller jar, pair of  
 @ on either side

rim .225 x .215

Ht of neck ca. .12 Ht ca. .094

note in clay large white bits as well as red, and

this has not been plastered.

following are scraps, in center table:

9.) pieces of neck w §§ @ §§

rim .242 x .236

Ht of neck <sup>thin</sup> .12

clay various shades in sections; red and white bits

(Note 0 960, P 22739, is top of grey jar)

Section  $\Phi$ , 1958

[11]

with siliceous tetrads

ca 350-340 BC

of period of Philip II of  
~~the~~ Macedonia, \* )

piece of rim of  
Allicord jar, drawn

toward rim

(temp cont. 35-)

31.V.58

DBT

12.V.58

This has been

$\Phi 1027$

catalogued, as the

rim profile is v.

indicative as to  
date, and shows

to be 4<sup>th</sup> cent.,  
not early.

BRITISH SCHOOL OF ARCHAEOLOGY

25, OGDON SQUARE,

ATHENS

GREECE

W

W

14 May 49

R.S. Young, Hesperia Supplement II, p 210

C 127

" --- and a balloon-bodied type, C 127

Fig 128 (p 179)

Ht (without its  
large ring (Ht))  
28

diam. 54

From wall,  
1st half of 7th cent.

(Fig. 128), made throughout the <sup>7th</sup> century and probably used for the export of wine or oil. Many of the children's burials in the Platonic cemetery were made in amphoras of this sort, and many fragments were found in the other deposit and in our well: C 127-133. There can be little doubt, then, that they were made in Athens. Their decoration is conventional and very simple; the body is forged, with reserved bands around the shoulder, and the neck is reserved and decorated with wheels, concentric circles, or diminishing triangles between wavy lines. Amphoras of such simple decoration can hardly have been exported for their own sake as pottery; yet they have been found as far afield as Daphne in Egypt, Gela, and Etruria. Clearly, then, they were sent out containing some Athenian product which was exported all over the Mediterranean.

presumably oil. Amphoras of this shape appear, moreover on the early Athenian silver coins. Seltman has suggested, very plausibly, that the amphoras shown on the coins represent the vessels in which

oil was exported from Athens. [S. T. Seltman, Athenian

Its History and Coinage, pp 716, fig 5, and pl. 1.] Our

balloon-bodied amphoras are closer in shape to those represented on the coins than are the Tyroan amphoras, which Seltman suggests contained the

Athenian oil. Balloon-bodied amphoras, moreover, continued to be made until the end of the seventh century, and later . . . . . a definite development of the shape

of the type . . . . . probably began to be made about 700 . . . . . # C 136 < P 7230 > . . . . . is

decorated with a wheel ornament which also appears on early coins [Seltman -] and bears a graffiti which may have been intended to indicate the number of measures that it could contain" [ p 228 - may be an epsilon, or possibly 5+3 = 8 ]

W.P.W. - 2 April 1952  
Note posted all this as being vague references, imprecise conclusions

≡

I Blackfigured to 520.

a. Potters, except Little Masters.

- Aischines PA 6-
- Amasis no
- Andokides PA 6- ancestor of orator.
- Charinos PA 5- author of Megarian decree.
- Cheiron no
- Ergotimos PA, ca 400.
- Ismenos no
- Kleimachos PA 350.
- Kolchos no
- Kriton PA 6-
- Lysiades PA late 5-
- Lysias PA 6-
- Mnesiades PA 4 (several)
- Nikosthenes PA 2 (twice)
- Oikopheles PA 4 (one)
- Priapos no
- Prokles PA 5-
- (Ps)oleas no
- Salax no
- Sosimos no
- Sotes PA 4 (once). Also Sotas (several)
- Theozotos PA: Theozotides 5-
- Tychias no

Total 23, 9 not in PA

b. Potters and Painters.

- Exekias PA 4 (several)
- Nearchos PA 3-
- Sophilos PA 5- father of Antiphon

Total 3, all in PA

c. Painters.

- Kealtes no
- Kleisophos PA, late 5-
- Kleitias no
- ho Lydos no
- Paideros no
- Paseas? PA 4, once
- Sikelos no

Total 8, 6 not in PA

d. Little Masters, potters

- Anakles no
- Antidoros PA, late 5-
- Archeneides PA 5-
- Archikles PA 5-
- Charitaios PA 4-
- Chiron no
- Epitimos no
- Ergoteles PA 5, once

- Eucheiros no, but Eucheir, PA 4-
- Gageos no
- Glaukytes no, but Love Name, 5.
- Hermogenes PA 4-, esp. Hellenistic
- Kaulos no
- Klitomenes no
- Myspios no
- Neandros PA 4-
- Phrynos PA 5-, four times
- Sokles PA 5-, common
- Sondros no. May be painter
- Taleides no
- Teles? no
- Thrax no
- Thypheithides no. Theopeithides, no. Thoupeithides, no.
- Tleson PA 5-
- Xenokles PA frequent

Total 25, 14 not in PA

5. Little Masters, painters.

Sakonides no. The only certain one. But several of the potters may have been painters also.

Total 1, not in PA.

II. Red-figured, 520 - 400.

a. Potters working in RF only.

(1) 525-500.

Menon PA 3- -

*28.IV.80 13.01*

*Quinn's name - cf. same artist*

*Signature of Exekias*

*Painter, and states the potters  
(found in (Prosp.) A (rare))*

*Andri Thomsen, The Origin  
of Distraction*

To

28. 10. 80 13.01

Owner's name - cf. gun wiper

Signature of Exekim

Painter, can state the pattern  
(found in Persp.) A (ring)

Andi Thomsen, TL Origin  
of distress



I Blackfigured to 520.

13.02

a. Potters, except Little Masters.

Aischines PA 6-  
Amasis no  
Andokides PA 6- ancestor of orator.  
Charinos PA 5- author of Megarian decree.  
Cheiron no  
Ergotimos PA, ca 400.  
Ismenos no  
Kleimachos PA 350.  
Kolchos no  
Kriton PA 6-  
Lysiades PA late 5-  
Lysias PA 6-  
Mnesiades PA 4 (several)  
Nikosthenes PA 2 (twice)  
Oikopheles PA 4 (one)  
Priapos no  
Prokles PA 5-  
(Ps)oleas no  
Salax no  
Sosimos no  
Sotes PA 4 (once). Also Sotas (several)  
Theozotos PA: Theozotides 5-  
Tychias no

Total 23, 9 not in PA

b. Potters and Painters.

Exekias PA 4 (several)  
Nearchos PA 3-  
Sophilos PA 5- father of Antiphon

Total 3, all in PA

c. Painters.

Kealtes no  
Kleisophos PA, late 5-  
Kleitias no  
ho Lydos no  
Paideros no  
Paseas? PA 4, once  
Sikelos no

Total 8, 6 not in PA

d. Little Masters, potters

Anakles no  
Antidoros PA, late 5-  
Archeneides PA 5-  
Archikles PA 5-  
Charitaios PA 4-  
Chiron no  
Epitimos no  
Ergoteles PA 5, once

Eucheiros no, but Eucheir, PA 4-  
Gageos no  
Glaukytes no, but Love Name, 5.  
Hermogenes PA 4-, esp. Hellenistic  
Kaulos no  
Klitomenes no  
Myspios no  
Neandros PA 4-  
Phrynos PA 5-, four times  
Sokles PA 5-, common  
Sondros no. May be painter  
Taleides no  
Teles? no  
Thrax no  
Thyphethides no. Theopeithides, no. Thoupeithides, no.  
Tleson PA 5-  
Xenokles PA frequent

Total 25, 14 not in PA

5. Little Masters, painters.

Sakonides no. The only certain one. But several of the potters may have been painters also.

Total 1, not in PA.

II. Red-figured, 520 - 400.

a. Potters working in RF only.

(1) 525-500.

Menon PA, late 5-  
Hilinos no  
Pamphaios no  
Hischylos no  
Chelis no  
Deiniades PA 4-  
Chachrylion no  
Sikanos PA, late 5, once  
Hermaios PA 4 and 2, once each.  
Euergides PA 4, once  
Pasiades PA 2, twice  
Paidikos? no. Se ARV<sup>2</sup>102.  
Hegesiboulos no  
Euxitheos PA 4-, frequent  
Phintias no. Philtias, no. also a painter  
Sosias PA 5-  
Gales no  
Python PA 5-, common  
Epiktetos II PA 4-, 3 times also a painter

Total 19, 9 not in PA.

(2) 500 - 480.

Pistoxenos PA 4, twice  
 Brygos no  
 Kleophrades  
 s. of Amasis no  
 Euphronios PA 5, frequent  
 also a painter  
 Gorgos PA, late 5-  
 Douris no  
 also a painter  
 Kalliades PA 5-, common  
 Hieron PA 5-, common  
 Myson no  
 also a painter  
 Syriskos no  
 Midas no. Mides, PA 5,  
 once.

Total 11, 5 not in PA.

(3) 480 - 400.

Sotades PA 4-  
 Megakles? PA 6-  
 Oreibeles no  
 Agathon PA 5-, frequent  
 Epigenes PA 6-, common  
 Xenotimos PA 5-  
 Mikion PA 5-, frequent  
 Meidias PA 4-, common  
 Erginos PA 4, once  
 Nikias PA 6-, common  
 Gaurion no  
 Xenophantos PA 4-

Total 12, 2 not in PA

(4) uncertain

Euphamos no  
 Kallis no  
 Lykinos PA 5-

Total 3, 2 not in PA

b. Potters and Painters:  
 already listed under a.

Phintias  
 Epiktetos II  
 Euphronios  
 Douris  
 Myson

c. Painters, Red-figure.

(1) 525-500

Psiax no  
 Euphronios PA 5, frequent  
 also a potter

Smikros PA 6-, frequent  
 Phintias no. also potter  
 Euthymides PA 4?, once, 2, once  
 Hypsis no, but hypsi- compounds  
 Oltos no  
 Epiktetos III PA, rare, see above  
 also potter  
 ho Skythes PA 6, once, 4, once  
 Peithinos no  
 Apollodoros PA 5-  
 Pheidippos PA 4-  
 Hermokrates PA hellenistic

Total 10 (13-3), 4 not in PA

(2) 500-480

Epiktetos II PA rare, see above  
 Myson no. also potter  
 Onesimos PA 6 (= the painter?),  
 hellenistic  
 Douris no  
 also potter  
 Makron no

Total 3 (5-2), 1 not in PA

(3) 480-400

Hermonax PA 4-  
 Mys PA 4, twice  
 Hegias PA 5-  
 Polygnotos I no  
 " II no  
 " III no  
 Polion no  
 Aison PA 5, once  
 Aristophanes PA  
 Euemporos? no

Total 10, 5 not in PA.

ATTIC

571