

VRG_Folder_0597

KT checks
at Agora

See folder under "AGORA: Alphabetical
Story of Kinn Haulles - SS listed by
types" Notes on an (uncomplete)
check done by AA in 1970, as the last
time, and with the expectation that it
may be necessary to move the cabinets
to a more remote place.

3.I.70

2

Discuss with MEIT

Separation and binding of KT series

In 1960 (on BINDER) we
had decided to bind the cart
copy. But it seems to me
quite possibly desirable to be able
to read this? and I will
keep both unbound ^{would} trans & flimsies.

Bind flimsy 1.) for us
" 2.) for N.M.

9.I.70

We have settled that when the
flimsies accumulate, they will
be ^{MEIT} separated & bound.

20.III.70 The sheets were separated
from the 'bound' binder, but nothing
has as yet been done.

Publication of KT numbers

Note they appear for 3 items from Lennart
89., Hess 1963, pp. 136-137; KT 244,
600, and 1510.

17.II.68

also somewhere else

bygn

28.II.81) [Delos 27 which has many
EAD 27, p. 323, explain these nos.]

29.II.72

See also Kygn piece, in press in Prague.
6.II.86 [also MSBF article, also Hill-Wood article.]

28.II.81

PMWM suggests the ought to be a
published statement that LK & EK have not
been given KT nos.

23.XT.61

4.01

19.84.60

KT plots needed
NOT EM
NOT SS

TD, ~~1~~ Corridor, ABC,
Parameter, Syme

4.02

max TD KT ϕ

Refutation for KT 340 of TD 6112 (bad ϕ , 434.18)

23. XI. 61

KT plots needed

NOT FM

NOT SS

4.01

TD, ~~4~~ Corners, ABC

Parameters, Sigma

man TD KT ϕ

Ref: ~~table~~ from KT 340 of TD 6112 (load ϕ , 434.18)

Plants Karamites & boneda 30. v. 100 5T
 KT 258 Ker VG 330 (clean carbonate part)
 ? KT 353 Ker. 170 for division? - clean also of carbonate
 Ker. 179 clean of carbonate. 4.03

Plants - Delos for report * Check also new Delos (units)

KT 9 TD 4018 ✓ (Bon φ, typical)
 15 728 ✓ (old Bon φ, not so well, etc.)
 36 4703 ✓ (185.39 not too good; see note & pub. (most complete no.))
 — 37 1627 (176.16 not too good)
 84 1193 ✓ (175.9 " " "
 99 3656 ✓, 4999 ✓ (182.16, 185.7)
 — 100 89 (172.14)
 ? — 102 2947 (AB.)
 145 2940 ✓ (180.28) (see OVER for del. TD)
 153 2831 ✓ (180.18)

Plants - Angos & repha?

KT 21 (Angos pub. no 41) for better line - of division

Plant Boneda & repeat?

KT 34 ABC (in letter '55, Edwards φ)
 Best supplements Ker VG 794
 things EM 1 good also

Plants Carmita:

KT 193 (47-108 (to 223) existing, GOR plus

checked them carefully, redone in Roll 388 (July 1956)

(Part Dels for replies.)

KT 155 TD 3774 ✓ (182.22 seems of Dou - badly light)

KT 171 TD 1452 ✓ (175.38 is dim)

unless left
at Agon)KT 245^{3?} TD 3629 ✓ (182.12, not good)

246 TD 2041 ✓ (177.34 is dim)

251 TD 2196 ✓ (178.24, dim)

? 256 TD 471 (173.5 - analyzed by G.C. table)

or TD 707 ✓ (Dels 10.40) Does this show a G?

265 ? TD 4301 ✓ (184.29 - tolerable)

TD 244 ✓ (172.31 - no relief)

? 276 TD 12 ✓ (172.2 ed by sharp?)

303 TD 2917 ✓ (180.26)

? 325^{6?} TD 1424 ✓ (175.31)

341 TD 31 ✓ (172.7)

TD 3263 ✓ (181.37)

? 344 TD 1266 ✓ (175.12)

TD 731 ✓ (173.30)

350 TD 2198 ✓ (178.25)

361 TD 522 ✓ (only 1938 of ex 16)

363³ TD 1280 ✓ if possible to get it really good

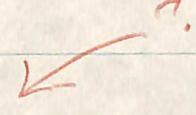
368 TD 1734 ✓ can improve on 176.24?

✓
(on over)

KT illustrations

Delos plant. 5 to 10 inches, on road

KT	422	TD	5171	
	453		1793	✓
	428		694	✓
	553		6098	✓
12.17.59	596		3222	✓
	609		1746	✓
<u>look at</u>	610		3875	✓
18.17.59	657		5372	✓
27.17.59	699		3242	✓
9.17.60	868		3550	✓



exp. for top, low road, in left edge

11.17.60 is not listed on KT photo file

✓ on Puddle 478

check if (good) of Delos 14.17
makes site bigger than it is. (EM exps
are smaller)

6.17.59

Symon stem needed for corpus

KT 547: X 234

13.17.59

ABC new of water

KT 614 ABC 9

Plan to finish KT tally in N. Museum
without checks (of identifi., and for illustr.)
for the present

[5.02]

XII.70 5.01

CHECK AND TALLY OF KT
IN N. MUSEUM

INCL. PHOT. LISTS (OLD)

was now used by the KT
(journal p. 55, under
I am not sure if that
is with new KT, &
on 12. XII. 59 (in the

250

selected 131 (see journal p. 57)

119 drawers

Remainder

Have not been able to work up & more than 4
drawers a day doing the full check, matching samples
with type photos, and choosing further up.
for supplementary photo. If doing it more
consecutively, might go faster, but certainly
could not beat the time if one counts getting
the listed photos. taken, and handle put
away.

4/119

i.e. 29 + working days would be needed.

We don't have this now, too much else to
do, and it seems as if it will have to be the
subject of a special grant, to cover the processing.

XII.70

5.01

CHECK AND TALLY OF KT
IN N. MUSEUM

INCL. PHOT. LISTS (OLD)

"FULL
CHECK"

Procedure

21.10.55

in N. Mass.

1- at same time

- 1.) check ident. s (~~pres. of rec. inst.~~)
by comparing good exp. with
ph. on file card, and
rest by good exp.
- 2.) check number, and write tally
has on master card
and for brackets.
- 3.) check ~~ident.~~, fractional

[5.02]

ALEX. BENACHI

LIST 23 MAY, 1946

- 4.) check reading on file
card
- 5.) check entry of film nos.
- 6.) Choose illustration,
and list items to be
phot. - reported.

Plan to finish KT tally in N. Museum
without checks (of identifi., and for illustr.)
 for the present

Total number of drawers now used by the KT
 sequence is about 250. (Journal p. 55, and
 5. XII. 59, gives 249, but I am not sure if that
 included the 1? or 2? drawers with new KT, &
 which numbers were given on 12. XII. 59 (in the
 series KT 2192-2309).

Total of drawers, ca.	250
Drawers already <u>fully</u> checked	<u>131</u> (see Journal p. 57)
Remainder	119 drawers

Have not been able to work up & more than 4
drawers a day, doing the full check, matching examples
 with type photos, and choosing further ex.
 for supplementary plot. If doing it more
 consecutively, might go faster, but certainly
 could not beat the time if one counts getting
 the listed photos. Take, and handle put
 away. 4/119

i. e. 29 + working days would be needed.

We don't have this now, too much else to
 do, and it seems as if it will have to be the
 subject of a special grant, to cover also processing.

The job is directly contributing to the Indian corpus, the readings being checked as well as the illustration. Should do 35 more or less concomitantly, too. Relatively easy to figure out time needed, and costs, e.g. guessing 5 bundles per donor, ^{2 N.Mus.} with not plot. - has it worked out about that?

$$\begin{array}{r} 119 \\ 5 \\ \hline 3 \text{¢ } 159.5 \text{ bundles} \\ 19.8 \end{array}, \text{ i.e. about 20 rolls of film.}$$

"(2 x 600) prints

$$\begin{array}{r} 1200 \text{ prints} \\ 5 \text{ cents each} \\ \hline \$60.00 \text{ for prints} \end{array}$$

Allow also for Agora processing.

3 or 4 meanwhile: it is inconvenient not to know the tally of examples in the N. Mus. (I want to turn over their copy to N. Mus. also), also, propose to do this next Thursday, 26.V.60, when A.S. has a holiday from the Water Co.

- 1.) A.S. will dust drawers ahead. (No. Smith ^{class.})
- 2.) M.E. will check numbers of each KT, and read off to A.S. He will enter in the duplicates, sitting below at some kind of table. He will check ₂ (for reading), mark with tally, and give to M.E. to Bartoula, which she places.

2.X.63
at EA

State of checks of KT at N. Mus, i.e. "full checks" including selection for illustration:

journal p. 57 : last page through KT 861
p. 58 (cf. p. 59) " " " KT 897

So, down : KT 1 - 897 (not p. 80)
2017 - 21³¹24 (see p. 65 - many lines in type in N. Mus)
945 }
2141 } see back of p. 75
2168 } - in context of
2172 } work in Alps, v. 62
2185 }
2278 }

1.IX.71
at EA

Looking through last part of N. Mus journal, I find the following situation with regard to the check of KT: (cf. journal p. 80)
Full checks has been used for KT 1 - 897

KT 2017 - 2131 (not all sup. in N. Mus.)
and see some indiv. KT, listed above on this page

Quick tally (see back of p. 57 for procedure)
KT 898 - 912 see back of p. 58
KT 913 - 1545 } " " " 57
" " " 58
1546 - 1863 journal 25.VI.60
1864 - 2256 " 4.VI.60 (see p. 19)
2257 - 2309 (down, but I don't see what day)

Types to be checked in W. Mus.

(i.e. special attention in general check because I did not manage to look at the hands in Jan. 1955)

- KT 2021
- KT 2024 (O in ep's name)
- 2030 reading as a whole
- 2044 esp. last line
- 2049 fabric of dentell
- 2052 note inverted letters
- 2056 reading as a whole
- 2057 top line

- 2062 reading
- 2063 " " "
- 2064 " " "
- 2067 " " " ✓
- 2068 " " "
- 2077 can Αισθησις εως be read as fals.
- 2078 reading as a whole
- 2101 check position of parentheses
- 2102 check reading (new name)
- 2110 " brackets
- 2114 is at edge on page?
- 2115 what was shape of stamp? Is it double-stamped? Are there any letters?
- 2117 reading
- 2121 cf. w. type of ΝΙΣΙΟΣ w. (top) Βουδα/νγ

(over)

[5.08]

27. 8. 54

T. Asotria-chloris sp. n. *A. Asotria* H. Karala.
T. Asotria-chloris sp. n. ———
Amis in Karala

KT 2123 *Amis*

2126 *check with*
KT 1818

2127 *Amis*

Check and tally of KT examples
and selection for illustration

[in N. Mus.]

This job has been taken up again, to get as much as possible finished before leaving A.D.

See procedure, of. vq letter to HAT of 19. ^{XII} ~~XII~~.55, p. 2, which goes into some detail. (Filed in PROGRESS REPORTS).

1. ~~XII~~.59 See pp. 34 ff. of N. Museum Journal, dated 6. VIII.55, etc., also, earlier, pp. 24 ff.

Note, p. 35, that tallying on master card began with KT 57. Note that entries for KT 1-56 must be made.
25. II. 60 MZ today entered these numbers on the master cards from the KT duplicates.

22. II. 60 In the autumn of 1959, i.e. Sept. - December, KT check and tally was done for KT 389 - 833 ^{through Drawer 127} ₁₁₁; and needed photos were taken more or less correctly, through KT 789. The finished check & tally covered slightly over half ^{of} the Kinds drawers at the N. Mus., or of the number of Kinds bundles; but much less than half the different types. 4 drawers is about all I worked up to doing in a day, when they were allowing us to stay from 8:00 or 9:00 to 4:00. This means about 30 more working days needed on this job. (So I'd best, for speed, to do several days in succession. However, when I got to the Kinds ^{on} other jobs, as to get Antiblythen profiles drawn, I fit in some time with KT, and on 20. II. 60 covered another drawer, through KT 849.

5.10

KT illustration
from EM

KT EM Plast. List

- KT 2086 EM 1 for Die 2
- 3 " " 1
- 2092 EM 2 for Die 2 (457.24 is badly
- 2093 " 1 for extra state of die (lighter)
- 2094 " 1 light for above, left
- 2099 " 1 all poss. letters (has been cleaned)
- 13. VII. 61 2100 EM 2 for name right end
- 3 " ~~name~~ ~~right end~~ (very sharp)
- 2104 EM 1 (218.32 is badly lighted, does not show vertical, nor letters of fab's name)
- 2109 EM 1 Only exp.
- 2114 EM 1 shows vertical } all
- EM 2 " " } non-
- EM 2 " " } letters
- 2115 EM 2 show pos. signs of stamp, and fact that there are no letters.
- 2116 EM 1 no letter shows —

↑
 on Roll 520

Roll 583

16. VIII. 62

- 2168 EM 2 (exp.) } all poss.
- EM 3 } letters
- 2185 EM 1 all letters but exp. lower left corner
- 2278 " 2 under side of ~~part~~ ~~part~~ is different in other exp

(KT EM Plat. List.
(cont. from 1610, 62)

~ 124
583

KT 1666 ✓ EM 1 Upper right part of
stamp exists only here

KT 769 ✓ EM 3 (had been omitted by error)

[5.13]

23 XI 61

KT illustration - items ^{listed as} needed from **EM**
Old lists needing to be checked - some have been taken

KT 1 - 388

KT EM to be ϕ / 1 been placed
But now need to recheck to early

KT 1	EM 5	(unless Agnes has better)	ones] <u>some have been taken</u>
KT 2	EM 1	(212.8, a little light struck)		
4	3, 11	to suppl. SS 2945		eq. on
6	2	(in most ways, much better than EM 1)		Roll 379
10	1	(device, and lower left of stamp)		Roll 380
12	1	(faintest example we have, definitely)		Roll 381
13	1	for top edge, - top of corner		→ CHECK
		2, or poss. 9, for device (written is excellent)		↑
14	5	for left edge		
15	1	device and upper right		
17	1	(237.2, ϕ dou - is it printing?)		
	2	supplementary		
18	3	(better suppl. to EM 1 than is EM 2)		
19		(Agnes expects only in KM)		
20	2			
21	1	? for whole stamp (hand & light)		
23	1	? 237.3 pretty good but ϕ dou. Is it printing?		
24	1	? 237.4 " " " " " " " " " "		
25	1	? 212.13, a little light str.		
	2	? 237.6, a little ϕ dou		" " " "
27	1	212.14 light struck, and badly light		
	2	? 237.7, a little ϕ dou - printing?		
29	1	" 8		
30	1	212.15 light struck, almost for device		
31	5	But suppl. to 30 & 36 (ARC) - left of stamp		

[5.13]

23 XI 61

KT

illustration

listed as
terms needed from

EM

KT 1 - 388

Old lists

needed to be checked - some have been later

Bring out in
towards - soap - nail brush
acid

4.IX.59
I can't see that
any of these lower
bars print.
But now need to
recheck to early

KT EM 5 to 1

- KT 1 EM 5 (unless Agnes has better) ones
- KT 2 EM 1 (212.8, a little light struck) same lower
- 4 3, 11 to suppl. SS 2945 29.00
- 6 2 (in most ways, much better than EM 1) R11 379
- 10 1 (device, and lower left of stamp) R20
- 12 1 (finest example we have, definitely) E
- 13 1 for top edge, = top of corner → CHECK
- 2, or poss. 9, for device (miller is excellent) ↑
- 14 5 for left edge
- 15 1 device and upper right
- 17 1 (237.2, φ dou - is it printing?)
- 2 supplementary
- 18 3 (better suppl. to EM 1 than is EM 2)
- 19 (Agnes exists only in NM)
- 20 2
- 21 1 ? for whole stamp (head & light)
- 23 1 ? 237.3 pretty good but φ dou. Is it printing?
- 24 1 ? 237.4 " " " " " " " " " " " "
- 25 1 ? 212.13, a little light str.
- 2 2 ? 237.6, a little φ dou
- 27 1 212.14 light struck, and badly light
- 2 ? 237.7, a little φ dou - printing?
- 29 1 " 8 " " " " " " " " " "
- 30 1 212.15 light struck, should for device
- 31 5 But suppl. to 308.30 (ABC) - left of stamp
Out on 5 also - should be a - marks - etc

• Try of Nitro
can give us a few
hours of 237.6
and if ϕ dow in way.

(2)

KT EM 56 ϕ

KT 33	EM 1 ?	212.17	a little light - str.
	2 ?		is v. good too
34	1 ?	237.10	a little ϕ dow
37	1 ?	212.18	a little light str.
38	1 ?	237.12	a little ϕ dow
39	1 ?	237.13	ϕ dow
	2		best supplement 1, shows whole <u>divin</u>
40	1 ?		- check w. Agon
46	2		for <u>divin</u>
53	1	212.19	light str. (to be used as <u>only ill.</u>)
54	1	212.20	light <u>divin</u>
	3	237.18	ϕ dow
	6		for top right
55	1	212.22	light str.
	2 (new)		for <u>divin</u>
56	2 ?		for <u>divin</u> file (divin shows poorly in SS 3520)
58	3		for letters (better in SS 6397)
59	2 ?		" " ; through pen, on best
64	1		" " much sharper than SS 844
65	1 ?	237.20	a little ϕ dow
66	2		(new no.) for <u>divin</u>
67	3 ?		left end of <u>impr</u>
69	1 ?	237.22	ϕ dow
	2 ?	237.23	"
	3		best shows <u>letter</u>

See if just as
good as SS, just
making out.

See if just as
good as SS.

KT	EM	Description
70	2	(237.25, φ dow)
	3	(diff.)
	4	(diff.)
	6	(diff.)
	13	(diff.)
	10	(diff.)
75	2 ?	(cl use SS, but φ not quite quite.)
81	1	best no. after
83	1	(212.25, lightest)
84	2 ?	
88	2	for AINEAKNI
89	1	(212.26, lightest)
96	2 ?	(238.44 sl. φ dow, and wrongly lighter)
98	2	
100	1 ?	to show chipping
102	1	best suppl. 5 TD 5740
107	2	reduced version of type
	1	(212.32 lightest) get left end →
	16 ?	incomplete but sharp, and best of club
108	1 ?	238.3 - little tipped, and not well lighter
109	1 ?	238.4 } could not be better
	2	5
	9	best of spangon, needed suppl. 5 EM 1

net 372
 ↓ 122

but say
 with at
 page

KT ^{phot. or} _{EM & by rephot.}

- KT 126 EM 5 (all letters, and a few on ground)
- 128 EM 1, 2 (212.35, 36 - cigarette)
- 129 EM 4
- 132 EM 2 (239.17, light & ? on dow)
- 133 EM 4 (for lower left, support)
- EM 3 ♀ (for device)
- 135 EM 3 (esp. for device)
- 137 EM 1 (239.18 is dow)
- 139 EM 1 ♀ (239.19 seems of dow)
- 141 EM 1 ♀ (" 20 of dow) (and could be both light)
- 142 EM 1 ♀ " 21 of dow and body lighter (maybe see of find)
- 143 EM 1 for continuous? Ψ
- 144 EM 2
- EM 3 esp. for top line (down) and for device at lower left corner.
- 146 EM 1 ? (cheapest of top 2 lines, stamp uncommon)
- 150 EM 1 (239.22 of dow = body lighter)
- EM 2, slight dip di
- 153 EM 2 (239.24 of dow = body lighter)
- 156 EM 3 best comb. with ABC 1
- EM 8 ? cheapest of device = nearly letters, incl. fab's name
- 163 EM 19 (stamp in ground)
- " 11 (device, = bottle half)
- 172 EM 2 (top, esp. left)

RU372
A

(EM plates
under)

- KT 179 EM 2 (The best 35, 17881, is ^{of a bit} small, as well as less good exp.)
- 180 EM 3 for Dic 2
- 191 EM 1 esp. for Dwin
EM 3 for whole stamp
- 192 EM 2 ? (can use TD 5126, but it does not show lower right, indicating no Dwin)
- 194 EM 4 ? for left end
- 197 EM 32 ? for Dwin
- 199 EM 2 for whole stamp
- 202 EM 3 " both line-edges
- 203 EM 4 left end, and lower it came (1A line be scraped off)
- 217 EM 3 (clear OAX, beginning of name) and Dwin in general
- 223 EM 1 (old ϕ - 234.22 - is ϕ too)
- 233 EM 1 get all the flaws
- 234 EM 4 for other variation - esp. upper right hand
EM 25? for sharp letters and scoring.
- (235 EM 1 213.30 is not v. good - both left & right)
- 237 EM 4 Dwin, and beginning of name
- 239 EM 1 Dwin (marks on handle of clay) and letters - light for right, slightly strong
- 247 EM 1 Show all letters but especially left edge
- 251 EM 10 For upper edge, and general sharpness.
- 253 EM 1 sec. st. } upper, not
EM 4 " " } plod. ?

3d neg. OK?

Check if better at Agua

Look in Sec. ST. files, and under survey the original

(Αριστοκλής, φρ. Εδουάρδου, κ. Σαφίρη)

→ KT 261 EM 1
 → KT 267 EM 1 ✓ check Agave exp. - said 8 to some "unusual"
 (if note, better EM 1 cert. needed)

268 EM 7 top stamp
 277 EM 15, for whole stamp - best example
 278 EM 2 for whole stamp, with special attention
 to letter beside device.

279 EM 3 especially for right half
 283 EM 5 for the device
 285 EM 2 " " " and bottom of stamp
 EM 14 " " top " "
 EM 8 for right end (padding for device
 device to be sharp, complete parts)

286 EM 1 (214, 10 is ϕ dev) especially for
 lower right corner

289 EM 10
 EM 5

296 EM 2 ? for normal length of stamp
 299 EM 3 ? for right side of stamp

300 EM 1 (214.13 ϕ dev)
 EM 3 (242.24 wrong ϕ dev)

301 EM 1

302 EM 3 for top

305 EM 7
 EM 3 for top, middle

309 EM 7 for top line wrap.

315 EM 1 (273.15 badly legible)

KY 316 FM 4

- 318 2 For device, ^{of stamp} and esp. top, middle
- 320 1 For device, with odd form
- 3 3 For lower leaf
- 5 " upper "
- 322 1 very fine esp.
- 327 8 for lower al, sides
- 330 1 of w. & of 55 11729
- 331 3 as al, diff. dir
- 330 1

340 4 for device, show knobs both sides, and for letters especially round small end of club

(acid) → 343 2 light from upper left corner
 345 2
 348 1 probably for whole stamp
 349 17 esp. for ΔΓΑΒ□

Bush stamps.
 Watch to set stamp down in picture
 look out for vertical lighting

(acid) → 352 19 left side, especially X
 24 device, and right-side letters, and surface of die (with cross-graining)

φ 354 7 - compare w. 35 7772
 355 2 for whole right side of stamp
 357 2 for all letters
 358 6 for top of stamp
 10 for device and neighboring letters
 359 5 " " " " "

360 14 for ^{whole device, including end of posts.} 2 letters & right. Please light a corner below, left. Show us.

ET 363 EM 1 after cleaning? For letter above
 head of line. light above left?
 a with 90°
 way

365 } EM 6 for letter below main and left
 and left ear!
 (to supplement SS 10204)

EM 1 for main and second stamps

366, I^{*} EM 1

Notes 2
 EM 16 and
 115 are
 pretty good
 of drawings

	2	
	156	
II	15	
	3	
III	.6	(at end of bit)
	31	
	112	
IV	(59 for sec. st.	
	9 variation - head of boulder (tectonic)	
	27 sharpness - get all surface detail	for drawing
V	152	†
	58 and sec. st	22 for left side
	61 " " "	43 sharpness
	65 " " "	88 } marks across
VII	4	95 } di

66 for dwin (which is line of I,
 in connection with letter not VII)

VIII	17	exp for bottom, left side, - dwin
	24	and sec. st.
	53	" " "
	55	" " "
	56	" " " II
	60	" " " A

(EM 24 sharp φ.
 53 } not 54
 55 } φ, as
 sec. st's
 are from
 ex. s. bit
 on 56)

367

2 dwin, and letter below

KT 371	EM 10	for divi
372	1	for divi
374	2	for sp. & divi
377	1	for divi and all letters
? 381	2	for diff. die (219.44, non?)
383	5	for divi
385	1	top up, and both (diff. die, sp?)
? 388	1	for divi?

Roll 379
 always
 new!

check
 2/10

KT illust.

27.8.61

[5.23]

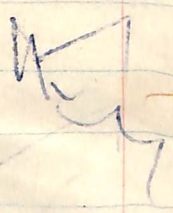
KT 764-892

2017-2080

EM photo desiderata - (photo. mostly taken in EM)

For photo

KT	764	EM	3	generally
	771	"	4	lower left
	"	"	6	right end
	775		1	left "
	776		2	lower left and ground
	"		8	upper " , lower right
	777		17	divin and right corner
	778		15	sp's name; ground sharpness
	779		1	under divin stand out
	"		15	for lower edge
	"		25	freshness of worm die
	782		4	for opening name
	783		2	sharpness of worm (secondary?) die
	"		4	especially upper right, with groove dips
	784		1	left half of stamp
	786		1	(clips for right end, a little above; show stamp as a whole, and esp. divin)
	"		8	peculiar impression of bottom line (mostly ^{cutters})
	787		1	for only illustration of this die
	788		4	left end, and stamp as a whole
	789		2	lower left corner; lower right
	795		1	whole stamp; date & lighting



redo
5/2/61

Red 465

KT illust.

23. XI '61

EM plot, desiderata -
in EM

plots - most laksu

[5.23]

KT 764-892

2017-2080

For plac

KT	EM	3	<u>stems</u>
769	"	4	generally lower left
"	"	6	right end
775	"	1	left "
776	"	2	lower left and ground
"	"	8	upper " , lower right
777	"	17	division - 1 right corner
778	"	15	ep's name; ground sharpness
779	"	1	under division stands out
"	"	15	for lower edge
"	"	25	freshness of worm die
782	"	4	for <u>apron</u> name
783	"	2	sharpness of worm (second?) die
"	"	4	especially upper right, with groove dips
784	"	1	left edge of stamp
786	"	1	(dip for right end, a little above; stem stamp as a whole, and esp. division)
"	"	8	peculiar impression of bottom line (unclear)
787	"	1	for only <u>illum</u> of this die
788	"	4	left end, and stamp as a whole
789	"	2	lower left corner; lower right
795	"	1	whole stamp; date & lighting

~~redo~~
5082

Roll 465

9.III.61

9.IV.60

817

3

5.III.59

5.25

Beginning with KT 795 EMX,
not yet plotted.

Photo. incidents - EM

	795		1	show whole stamp, attention to lighting
	KT 796	EM	9	all possible letters
			4	the x9d (ep's name) not visible in EM 9
	797	EM	1	generally, for sharpness
			8	esp. AΣ
	801		1	bottom line
	807		2	all visible letters and dms.
	809		4	upper left
	810		3	top line
	811		4	
			6	
19.IV.59	813		4	2 flaws, left end
	815		2	lights from upper left
	816		1	" " " " show right end
1.III.61	817		2	general (Dic 2)
	"		3	" (Dic 1)
	"		4	bottom line " "
			5	top " " "
	822		2	devices especially
	826		7	devices especially
	828		3	right end and lower left
	830		10	ep's initials letters esp.
	831		11	right and bottom
	832		3	left end

in RU 485

504 on p. 4

(2)

N.M. KT ϕ list cont.

KT	834	1	right end.	(in Roll 504)
		2	lower edge ✓	
	840	9	upper left ✓	
	842	1	general. Light from left and above	
	844	2	" ✓ Die variants	
	845	1?	" but on one left letter are clear	
	849	3	lower left ^{in shadow} corner (no letter below X0Y)	
	850	1	top line, left $\frac{1}{2}$ ✓	
	856	2	lower edge ✓	
	868	5 (or)	left end, and possible 3 rd line ✓ of letter	
	869	14	whole stamp, including left edges ✓	
	870	11	" " and <u>flaw</u> ✓	
		13	upper left, little <u>flaw</u> ✓	
	872	2	left right end ✓	
	873	3	WAOAMA ← esp. ✓	
	874	1		

Roll 506 (new listing)
 842. EM
 842. EM
 stamps for

not in 506

prints (and photo list marked 2)

redo?

16.8.61	888	3	(springs)
still to do.	888	2	left part A stamp
	892	10	general

For next list
 29.7.61

22.8.61

(Roll 509 in HPS) Begin Roll 510 with

KT	842	EM	1
	849		3
	877		3
	888		2
	892		10

See desiderata about.

Go on with Roll 510

ELW stamps in form but when in list list?

N.M. KT & list cont.

SOS DSD 5	KT	2017	EM 1	
		2024	1	
		2044	1	
			2	
		2046	1	
			2	
		2052	1	for "above" eye
		2053	1	for 1947
			3	general, esp. both lin
			6	whatever shows
		2055	1	general, esp. fabricant
		2056	2	esp. epoxym
		2057	2	all
			1	general (all of scordated body)
	22.11.61		2068	1
		2070	1	esp. K ^(left) and device
		2071	1	ground; esp. left and, but all
		"	5	whole length of strip, not end of top lin
23.11.61		2076	1	left part
9.12.61		2080	1	all poss. cells (only 2 vs. case)

Last 2, MET Under, may  k.o.k. - getting too dark

KT : check of identifications, readings,
and illustration

also of secondary stamps and fabric features

In Alexandria, identifications were checked fully at the Boushi collection, and in part at the Museum (no tin for all).

Checks for ^{type} readings and illustration have continued during the identification of examples everywhere, in that good examples, and noticeably supplementary examples, have been photographed; and changes have been made in the readings when an example called attention to the need; but brackets have not been cleared up systematically, nor have die variations been noted systematically; nor have, of course, illustrations been narrowed down, until check of big N. Mus. collection.

Now in National Museum the check has included the type readings as well as the ident. of examples, ~~also~~ also other items to be noticed while handling ^{assembled} examples of a type, such as existence of sec. stamps and features of fabric, fractional sig. (& some extent), etc. Illustrations are being selected, and when ready, and not needed for files, attached to a 4" x 6" card in the KT phot. file. ~~At~~ The tally now being made of the N. Mus. bundles is entered both in the KT sequence (which is also N. Mus. record) ^{and} ~~but~~ also on the type master cards (plain file). System has gradually developed - it will be necessary to go over again to beginning to complete.

Beginning with KT 300, shall check Agora identifications etc. currently with National Museum. check made, indicated by ✓

N. MUS. - KNIDIAN

(9. XII. 53 rec'd)

AΔ is numbering of bundles with RM nos.

[7.03]

7.09 4. x. 52

F KT

3. II. 56.

7.05

1-12-53	1-10	10
2-12-53	11-22	12
3-12-53	23-34	12

exist

3. X. 52 7.02

120 types & the hand
 15 plates
 600
 120
 1800 - which is the count of

29. XI. 70

NUMBERING OF K (nidian) T (types) [7.01]

For published statement on these numbers, see Delos 27, p. ~~322~~ 323.

for additional types from Delos, because I believe these were compensated by corrections in files.

by AΔ from copy (sequence), number more are all only supported Demand.

1799

1803

1824

1874

1878

1891

29. XII. 70

N U M B E R I N G O F K (nidian) T (ypos) [7.01]

For published statement on these numbers, see
Delos 27, p. ~~322~~ 323.

120	types & the head
<u>15</u>	heads
600	
120	
<u>1800</u>	- weight is the count of
.08	kind of type last
	year
<u>144.00</u>	- 8% added at

end would make us
need another pad.

No allowance made
for additional type
for Delos, because I
believe there was
compensated by corrections
in files.

N. MUS. - KNIDIAN

19. XII. 53
rec'd

A Δ is numbering of
samples with EM nos.

[7.03]

1-12-53	1-10	10
2-12-53	11-22	12
3-12-53	23-34	12
4-12-53	35-45	11
5-12-53	46-56	11
7-12-53	57-64	8
8-12-53	65-74	10
9-12-53	75-76	2

Don, then, through kindin

Drawer 76.

24 KT. 155

~~NS~~

KT 325 - 334

at Agan, with
on waste card use of EM
and check for illegals.
using KT copy
and check for missing

KT 337 -

AT Agan, with EM table
for waste cards

→
 main KT file
 " file cards
 " KT sequence
 a Bad

KM DIAN : NUMBERING OF KT

3.II.56.

7.05

List of KT ^{which have} ceased to exist

KT	KT
111	1941
112	1980
116	2081
201	2123
848	2136
866 < 890 (I.64)	
1056	
1126	
1687 ¹³⁵⁷	
1693	
1696	
1750 ¹⁷¹⁸	
1757	
1758	
1765	
1768	
1777	
1778	
1793	
1796	
1799	
1803	
1824	
1874	
1878	
1891	

Taken by AD from
KT copy (sequence).
A number more are
still only supported
by Diamond.

The Numbering of Kinds Types

The first, and main, series of KT numbers were given in October - November 1952: KT 1-1805, based on Kinds handles chiefly from Athens, ~~Agos~~, and from Delos. See section on Kinds in folder ATHENS - NATIONAL MUSEUM: the numbers were given at that time in order to facilitate the classification of the N. Mus. Kinds. During the following two months, an estimated 6000 handles were typed using these numbers, and about 80 new types discovered, and about 60 corrections to old types. See PROGRESS REPORTS - contrib. to NAT. annual report of April 1953.

KT 1806 - 1893 were given as a result of this early winter campaign in the N. Mus., which stopped in January 1953. I find no record of just when these numbers were given, but see calendar entry for 24. I. 53: "putting things in order, mostly for new KT numbers," also record of checking of new types in N.M. in general journal of work done there, about this date.

Since then, further new types have been ^{at the National Museum} identified, studied to some extent by VG (cf. N. Mus. General journal for 10. VII. 53, 7. VIII. 53, 4. XI. 53) ~~noted~~, photographed at various times (Roll 218, 18. VI. 53, is perhaps the first), and stored separately, at first in their photographic order (see N. Mus. general journal 27. XI. 53), and finally in their

file order (rearranged by MZ = AD in 2 runs 8.7.54).
 (Something of a chaos, because unphotographed bundles of
 new types had to be fitted into their places.)

A file of master cards of new types, unnumbered,
 has been kept ^{from their first appearance in the index} separately, using the "stripes" or original
 Agave Knicker file, the plain (V9) copy of the index
 having these new cards filed in their places. Probably
 the bulk of these new types derive from National Museum
 bundles, but some are from the Agave, some from Benedict,
 others from miscellaneous other places. A count was
 made in December 1953, for the report to the Philos.
 Society: a total came to 142 of which about 100 were
^{see note attached to copy of report to Phil. Soc. 1953.}
 derived from N. Mus. bundles. Counting now the master cards
 in the New Types file, I find 212; a good many are fragments
 and the count may be whittled down. The arrangement
 of the N. Mus. new types in file order was accomplished with
 the help of the picture cards, got out and placed with their
 master cards, all this in preparation also for the check I
 should make in preparation for the giving of new type numbers.
 MZ got out the picture cards however from the V9 (plain) copy
 of the index, because it has somewhat more illustration;
 this mixture is not a good idea, and it will certainly be
 desirable to get the check made and the numbers given
 as soon as possible.

It was hoped to finish up everything in N. Mus. before numbering another series, get it all into a neat alphabetical series of ~~these~~ ^{new} types. However, there remain these two residues of different circulars, and in addition to Olynthian handles gathered up only ^{late} last summer, see journal N. Mus. journal for 10. IX. 54, with about 2 baskets full of Knidian, NE estimates - in fact 247 were counted. These have to be washed and renumbered before being read. It seems too late in the season to do this work in the museum. We may as well plan to include any remaining new types from these with the next, or Alexandria, Coet.

On 15. X. 54, I made a small start at checking the new types.

7. I. 55 - Work continued, checking the new KT (see calendar)

On 31. X. 54 I checked in the Museum, getting through half the drawers (3376) checking doubtful readings. No time to finish this job.

On 5. I. 55, ME went to whole new set,
 KT 1893 - 2131 239 new types

$$\begin{array}{r} 1893 \\ 893 \\ \hline 2387 \end{array}$$

18. II. 55 It was decided to give numbers to the new types found in Aho before leaving them, so that handles could be marked before being put away. On 26. II. 55, these numbers were given:
 KT 2132 - 2191, based on handles in the Museum and Ben. collections.
60 new types 16 new types given earlier proved non-existent

14. XII. 59

On Saturday, Dec. 12, and today, MZ wrote the first new KT numbered series in nearly 5 years, being KT 2192-2309, 118 new KT. These derive from many sources, but pre-
 predominantly, MZ thinks, from ^{i.e. new fruit in ABC} Alexandria. Some are from the Dutchman expedition. Some are types isolated before, but not at first numbered, being then (at least) illegible, including ~~many~~ ^{many} those in the National Museum (cf. Poll 457).

Many chores now to be done, numbering bundles and photographs, and filing lists, and other records.

MZ has suggested Mr. Bernardi send us a new set of rubbings of all his "new KT", which she can number and return to him. We will speak about this when he comes here.

24. VI. 60

This was done, in principle. He had examples on file with us of 52 new types. When he sent rubbings, he missed 7 types (of which MZ has list, in Bernardi's Kunda folder). On being informed of this, we thought they would turn up some day.

MS

Watch alphabet

Write in brackets (check w. families of doubt)

e.g. type A
Δορυχο-
οιοσ Κ. (ιδιοσ)
van

- if fac. Μόριος is next line,
Δ. must be sp. as out of place

on additional cards for same
type, with KT no. ()

Underline name in

alphabet, sequence

On known type, when known
or guess with
(row) or type A Διοσκειπ. or
Aivσιος?

7.106

Επί Κλεψυβ-
ροτου Κνίδιο-
ν Απολαυσιου

with
"D. only"
if case

? "dot" ?
e.g. -

On fragmentary readings,
and in general on all when
there can be some doubt about
identification, write the
initial item on a type card.

below each type no, write
in D. number, if that is all there
is, or if there is a handle,
the 1st on list (which will be
annotated also on the device card)

KT 17
as SS 932

care not to give
sep. nos. to second card
of same type.

In copying type sequences 7.10a

MS

Water alphabet

Write in brackets (check w. bundles of double)

e.g. type of Scoville 0100 Ky (1 Scov)!!
Was

- of pub. Maps as well as
Δ. used to sp. as out of place

on additional cards for some
type, with KT no. ()

Underline name in
alphabetical sequence
on known type, when known
or guess with typing of 400 specimens
(over) or type of Airoso?

Benaki Pl. I, 4

MUSEUM ;

4. x. 52

KNIDIAN

7.11

Plan at the National Museum
and the numbering of Knidian Types

(in the epigr. museum)

most files were washed, roughly sorted,
coming to 10,685, including the Late Knidian
a few of the more promising acicular
status holiday, Dec 1949 - Jan 1950. The bundles
in the epigr. museum court, according
and the better or worse preservation.
the minatory corpus volume, it was
reaching out around storage of
can fortunately now be done with them
in combination with those from the AAE, instead of the latter
leaving to be added on to a revised sort of appendix.

76% of the 128 files were Knidian

13961	10685.00
	97727
	91230
	83766
	7464

3741	2nd list as counted by the B.
.76	
22446	
26487	
2843.16	of the 2nd list and 60 Knidian

10685
2843

13,528 may be expected as the total Knidian in the Nat'l Mus

- 1000 (?) illegible

3811 | 12,528 | ca 320 drawings (12.5.53)

The estimated total 13,528 is probably a couple of thousand

more than the total of Knidian at Delos, including the ca. 3000 of uncatalogued. It is very much larger than the Knidian total at Delos (3695). These latter took roughly 6 weeks

(over)

13961
111688
13961
97727
13961
83766

26.71.52
Secret count
about 3000
see original
notes, 18
copy.

KNIDIAN

Knidian at the National Museum and the numbering of Knidian Types

(in the spiq. museum)

Those from the first pile, were washed, roughly sorted, and tabbed in 1949, coming to 10,685, including the Late Knidian. Readings were made of a few of the more promising circular stamps in MZ's Christmas holiday, ^{Dec} 1949-^{Jan} 50. The bundles have remained in heaps in the spiq. museum court, according to the shape of the stamp and the better or worse preservation.

For the ^{sake} ~~idea~~ of the minatory corpus volume, it was necessary to organize the recording and ordered storage of these bundles. This can fortunately now be done ~~with~~ in combination with those from the AAE, instead of the latter having to be added on in a horrible sort of appendix.

76 % of the 1st pile were Knidian

13961	10685.00
	97727
	91230
	83786
	7464

3741	and list as recorded by the B.
.76	
22446	
26487	
2843.16	of the 2nd list and list to Knidian (X)

10685
2843

13,528 may be expected as the total Knidian in the Nat'l Mus

- 1000 (?) illegible

3814 | 12,528 | ca 320 drawings (12,8.63)

The estimated total 13,528 is probably a couple of thousand

(X) 26,71.52 more than the total of Knidian at Delos, including the ca. 3000 of uncatalogued. It is very much larger than the Knidian total at Delos (3695). These latter took roughly 6 weeks

(over)

13961
111628
13961
7
97727
13961
83786

(X) 26,71.52
secret count
to about 3000
see general
notes, of
lots.

of a man's time & report, making readings in triplicate, with brackets, dots etc., and tabulating in the index for every reading of a known type; plus some additional work of fussing over difficult examples by us in the fall. ~~etc~~

It was necessary to give to Delos handles inventory numbers by which their finding places ^{and date} could be identified, since the casts were marked with such. This was being so with the N.M. handles, it has always been planned to give type numbers to the Knidian as has been done for the Rhodian, to a great saving of recording time. I had expected to make these number combinations of sp. and pb. number (5/7 and such like). But there is still much work to do on the prosopography before the number of ~~persons~~ homonyms can be straightened out, and the work on the N.M. Knidians cannot be further postponed, and I ^{personally} must spend most of the next three months on the Pnyx article, with the Thasian chronology.

So I have decided to number the types in the Agora index arbitrarily, following the sequence in which they are stored here (1st alphabet. by pb., then by sp. when the types have no pb., then by division when the types have no pb., no sp.). These type numbers will be used for the National Museum Knidian, ~~which~~ with examples - numbers added to each type of which examples are found. New types to be added etc. etc.

Duplicating pads have been ordered for this purpose, Mrs. Karanassos calling this afternoon for the specifications.

They will be like the Delos pads, but with a different explanatory note at the beginning, and each "card" section will be marked at the upper left corner with the letters KT for Kinds types, numbers to be added then.

ME will copy on these pads the whole series of Kindsian type readings. There will probably be not more than 2000 (1800 counted a year or so ago, for the cost estimate of the Kindsian corpus). I have ordered 20 pads with 120 number spaces for each, providing triplicate copies. (Each pad has 15 heavy sheets and 30 thin sheet, printed in 8 "cards"). The type numbers will be added to the master cards in the V9 copy of the Kindsian index, as the numbers to types in the copy. ^(The name in place in the alphab. sequence is to be underlined.)

When the type readings have been thus written in triplicate in alphabetical series, the heavy sheets will be taken out and fastened together, the thin-paper duplicates put aside. The heavy-sheet copy will be used for entering the EM ^{usually} ~~examples~~ ^{examples}, which when the bundles can ^{be numbered} ("KT 79"), and stored numerically by the KT number. ^{EM 4"} As soon as we get the drawers, we can begin to put them in, allowing space in proportion to the number of each type found at the Agora; but probably these won't be drawers until before the reading has all been done anyway. Entries will not be made in the Agora index, or in the thin-paper duplicates, until all is over, when it can be done in alphabetical sequence with economy of time.

Small cards with ^{type} readings are being made & put in the

drawers. This work was begun by Ant. Dim. 27. IX. 52 and has been continued by Ant. And., who has now begun the second drawer of the v9 copy of the Pr. index. It was thought to assign the type numbers by means of these cards, but obviously I need a continuous copy of ~~these~~ the sequences of types, to be able to look up particular ones; and by using a duplicate pack we supply the N.M. with a list of their types and examples, without all that history by Miss Kokoni. The small cards have notations as to how many Agre examples there are, so we can estimate space in drawers, or how to space out files. This latter job can be done by M.E. as soon as the small cards have the type numbers and can so be put into storage order. Allow roughly 50 to a heap, or ^{up to 40} ~~30~~ 55-count, in most state-signs like those we used for the Phodian and lay them out ^{in order} with plenty of space in their allotted places. — That index too many files, say 100 to a heap, (but not breaking up the ones) up to 80 55-count. ~~but~~ with 13,528 bundles, that index 100 heaps or a little more. We will need to lay ^{καρτόνια} newspapers something under them, unless we can put them inside on the floor.

24. 8. 52

For the Kinder type list, the duplicating pads have since been received. It looked as if there would be too many anomalies, in the list if it were copied directly, from the index. The master cards were therefore taken out ^{from the v.g. copy} (by A.A. so far as he could manage) and have been sorted, with some revision, especially in the early part of the alphabet, when the prosopography cards had been in their beginnings, and I did not know enough to make many corrections that can now be made, - with, for instance, the assistance given by the old copy of the index now having been sorted with the sponge cards as indexes.

The sections of the sequence will be 1.) fabricants, including types not fully read of which the fabricant is read; 2.) sponges, of types which did not contain a fab. name; 3.) devices, of types which contained neither fab. nor eps; 4.) devices ^{of types wh. contained no names} (one or two types which are in the regular kind., not EK or (K)); 5.) frag. types, in which a) frag. fab. of ambiguous ^(name + eps) ~~restoration~~; b) sponge is pres.; c) device - no complete names; d) titles - no complete names as devices. Might possibly be better just to put this remainder in its index order, and number it? Have still to decide what to do with isolated notes ^{but in at least 9 notes} of wh. name is not known, and pieces of whole functions are not known; and to try to read a few of these remainders (but this is difficult with the device files all undown).

5. XI. 52

My preparation of the master cards for copying of the sequence was completed 29. X, with a ~~total~~ ^{total} of 16 numbers on old duplicating pad

(pre-Delos). 30. x I copied about ⁷² 50 types, and then M2 took over. She has been copying them at the rate of 200 and more a day, not doing much else, reached 920 yesterday.

Against errors in numbering, I had made a chart of what numbers should be at page-ends: this was easier than writing them ^(as at Delos) into the pads, and I thought better, in case we needed to rewrite a page, which seemed a reasonable possibility. However, M2 fell into a column for the odd hundreds instead of the even hundreds, and followed 472 by 493. The omission of the 20 numbers she discovered herself ~~rather~~ by noticing that the end of the pad came on an -8; she did not investigate at once, but fairly soon. Numbers which had to be written-over were 473 - 656 inclusive. They are not very clear, and it will probably be best for them to be rewritten. ^{was done on page 65}

A.A. is entering the KT numbers, as the ^{v9} master cards have been marked by M2, on the v9 divider cards (identifying the photographs of the types), and on the master cards of the old file. At the beginning, he misunderstood, and the KT numbers have been written in the old file on cross-reference cards, not on the master cards; this error persisted through KT 312, and these types should be redone in the old file.

For sorting Knudsen at National Museum.

List of piles to be made, with inclusion KT numbers.

Piles	Piles
1. KT 1-20 (79 SS)	21. KT 425-460 (81 SS)
2. KT 21-50 (78 SS)	22. KT 460-480 (72 SS)
3. KT 51-70 (82 SS)	23. KT 481-489 (77 SS)
4. KT 71-100 (78 SS)	24. KT 490-510 (72 SS)
5. KT 101-110 (82 SS)	25. KT 511-545 (75 SS)
6. KT 113-121 (85 SS)	26. KT 546-555 (63 SS)
7. KT 122-153 (85 SS)	27. KT 556-558 (66 SS)
8. KT 154-177 (74 SS)	28. KT 560-580 (67 SS)
9. KT 178-197 (86 SS)	29. KT 581-610 (82 SS)
10. KT 198-233 (87 SS)	30. KT 611-625 (72 SS)
11. KT 233-250 (72 SS)	31. KT 626-650 (68 SS)
12. KT 250-285 (78 SS)	32. KT 651-671 (81 SS)
13. KT 286-296 (80 SS)	33. KT 672-700 (69 SS)
14. KT 297-320 (79 SS)	34. KT 702-730 (80 SS)
15. KT 321-340 (82 SS)	35. KT 731-760 (78 SS)
16. KT 341-355 (60 SS)	36. KT 761-780 (75 SS)
17. KT 356-365 (51 SS)	37. KT 781-799 (80 SS)
18. KT 366-368 (78 SS)	38. KT 800-815 (74 SS)
19. KT 369-389 (68 SS)	39. KT 816-850 (67 SS)
20. KT 390-424 (77 SS)	40. KT 851-875 (81 SS)

Piles

41 KT 876 - 905 (78 SS)
 42 KT 906 - 921 (75 SS)
 43 KT 922 - 933 (70 SS)
 44 KT 934 - 958 (65 SS)
 45 KT 959 - 977 (75 SS)
 46 KT 978 - 1011 (74 SS)
 47 KT 1012 - 1037 (78 SS)
 48 KT 1038 - 1063 (74 SS)
 49 KT 1064 - 1082 (83 SS)
 50 KT 1083 - 1112 (79 SS)
 51 KT 1114 - 1127 (63 SS)
 52 KT 1129 - 1139 (69 SS)
 53 KT 1140 - 1163 (80 SS)
 54 KT 1164 - 1197 (84 SS)
 55 KT 1198 - 1227 (80 SS)
 56 KT 1228 - 1265 (80 SS)
 57 KT 1266 - 1278 (88 SS)
 58 KT 1279 - 1283 (45 SS)
 59 KT 1286 - 1320 (71 SS)
 60 KT 1321 - 1360 (75 SS)
 61 KT 1362 - 1395 (72 SS)
 62 KT 1396 - 1433 (62 SS)
 63 KT 1434 - 1455 (71 SS)

Piles

64 KT 1456 - 1487 (67 SS)
 65 KT 1488 - 1500 (73 SS)
 66 KT 1501 - 1516 (74 SS)
 67 KT 1517 - 1529 (76 SS)
 68 KT 1530 - 1534 (70 SS)
 69 KT 1535 - 1547 (80 SS)
 70 KT 1548 - 1568 (62 SS)
 71 KT 1569 - 1583 (71 SS)
 72 KT 1584 - 1602 (74 SS)
 73 KT 1603 - 1624 (82 SS)
 74 KT 1625 - 1642 (60 SS)
 75 KT 1643 - 1659 (76 SS)
 76 KT 1660 - 1730 (60 SS)
 77 KT 1731 - 1805 (74 SS)
 78
 79

8. RT. 52

ME has this morning reached the end of the types copy, with KT 1805 - close to the estimated 1800. But note that 117 types have been omitted from the numbered sequence, ^{nearly all} as being known only from Dumont, and being close to types known in actuality, or obviously easy to mistake for them. These are marked with NT on the master card, upper left. For the present they will be ^{of NT has been noted in the left of D.} refilled. A.A. is at 1545 in entering the KT numbers on the device cards and on the old master cards. He has still to pass the first 312 in the old file (see above) and may rewrite ME's numbers 473-656 on a new master card.

ME is now counting SS of the types, in order to plan the files for sorting. We did together the first two: 1.) KT⁷⁹⁵⁵ 1-20, 2.) KT⁷⁸⁵⁵ 21-50. Yesterday, I got from the carpentering shop (where Dess cabinets have been finished) 27 small wood blocks suitable for inscribing with ^{inclusion} types numbers; must find more such, or fetch marble chips to make up an additional 75 or so.

When a number has been entered, corrected, etc. by A.A., ME can start to refill the cards, when the index will be ready to use.

12. RT. 52

Master John cut us more wood blocks. The files estimated by ME turned out to be only 77: obviously they will come to more than 100 in a file - comes probably of the fact that the Agon SS were counted before being fully sorted (the unsorted and the cat. - not read) A.A. is still writing on others, file numbers and

inclusion of T numbers, with the brush pen. M.E. finished this
morning, the ^{corrected} numbering of the old file, a small ^{remaining} batch of cards which
AA had not numbered, leaving numbered ^{to mistake} address to express
cards.

At about 9:30 ^{this evening} we went by taxi to the N.M., with a
V9 copy of the kind. index. Got table & chairs from waitress,
set up files ^{in the sun, such as it was, in the window}, gambili full of kind - bundles brought over from
the ~~new~~ AA2 file, and M.E. identified the majority before 12:30,
when it began to rain. In the meanwhile, A.A. set in order
and put away the Bon "Thesaur" numbered series, in drawers in
the Rhodia cabinet, the last drawer, as time & put in numerical
order today, just put in, for shelter. I stayed until ten
for all to go, and identified and numbered some stamps, I
think two could profitably work, but perhaps not unless
they knew the files well.

We leave part of numbered
bundles in a gambili, as we have not yet been able to lay
out even such matters as are ready; the more detailed
& clean up the skeletons plan has still not done it. I
went up to speak about this, & which Mr. Yalouris had
undertaken to attend to, but he has now gone to Olympia.
Both Sammi and Christa (who came down to see about
the size of the frame for the proposed cabinets - he wanted it
them in smaller units) - both of them promised that
tomorrow at latest the man would clear the rest

see ground
joined on N.M.

of the floor. Presently the man - "Vaslas" - came, and I showed him that we need to ~~sweep~~^{sweep} the floor, not just the part he has covered by sweeping to the side; he seemed reluctant but perhaps he will do it.

We left the files (2 drawers w. Mitor, one in a safe part of the Rhodian cabinet).

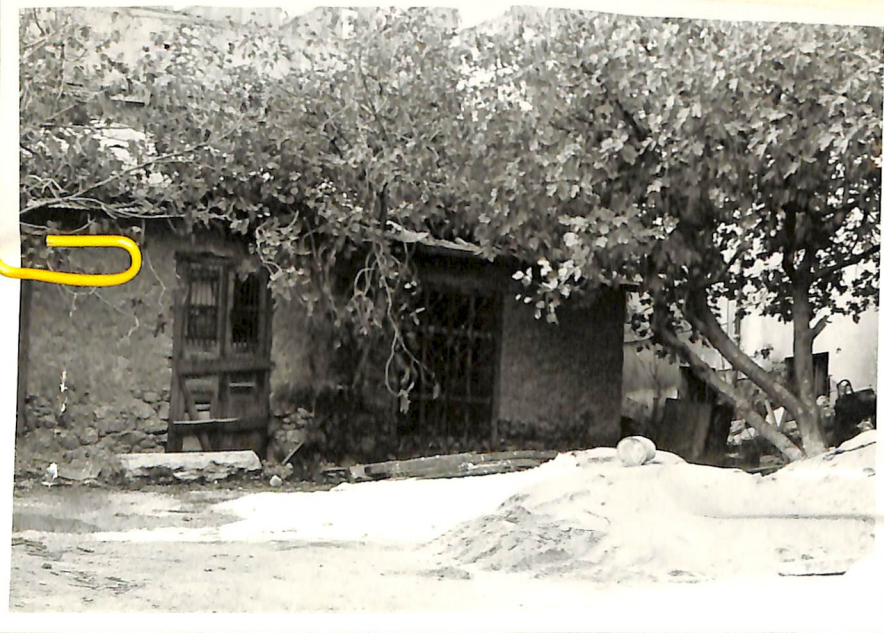
14. XI. 52 Yesterday early I went to the N.M. and found MS and AA at work. Showed AA how to number the newly read, and to mark AAE on the files of miscel. & kindim from this lot, after which we will bring the others from the other apothekes, so they can all be sorted together. Luckily we had sun both yesterday and today, for the reading. Today MS identified 117 stamps, and put another 30[?] or so in the collection of unread. Suppose she gets through 150 a day, how many days for 13,500?

$$\begin{array}{r}
 86 + \quad \quad \quad 87 \text{ days} \\
 150 \overline{) 13500} \\
 \underline{1200} \\
 1000 \\
 \underline{900} \\
 100
 \end{array}$$

23. XI. 52 Since then, MS and AA have worked every morning in the N.M., staying, roughly, until 1:30 to do as much as possible before it is too cold. There has been sun most days, rain only one day (3 April, 21. XI). MS has been reading over 100 a day; with the unread, the number done by now, after 9 days, must be well over 1000, or over a third of the AAE lot. There are some

new and corrected types, from which new type cards to be made, also KT numbers. AA has finished writing AAE on the lot from the case inner court, instead and to include ^{KT} nos. of handles identified by ME. These are in a pile inside the room with the Rhodin cabinet: please not get around & lay out files. Yesterday it was necessary to move the remainder of unsorted ~~handles~~ handles, to make room for the builders, who needed to plan a ramp for the end of Yalovins etc.; a workman assisted AA to do it.

Plans: Tuesday, if fine, move old file over, keeping both there for a few weeks. A.A. to carry over basket



unless from the other court, work ^{using old file} types and give type numbers. AA for AA to work also on make ME to concentrate on rest of file is relatively free. 10:30, found ME set up to read on (colours is still not cleared) on without much on today,

but the builders are all over the place by the figures, with piles of sand and lime. [See 204.10, attached.]

The washed kinders which have not been touched are now in a heap on a girka near the entrance of this apartment. The heap is not much larger than that made by those

new and rounded types, from which new type cards & books, also KT numbers. AA has finished writing AAE on the lot from the same inner court, inside and to ^{KT} inside ^{nos.} of handles identified by ME. These are in - files inside the room with the Phosin cabinet: please not get cleared & lay out files. Yesterday, it was necessary to move the remainder of unsorted ~~handles~~ handles, to make room for the builders, who needed to plan a original & end of Yalovins etc.; a workman assisted AA to do it.

Plans: Tuesday, if fine, move old file over, keeping better than for a few weeks. AA to carry over basket-fuls of the easier rectangulars from the other court, work when necessary, see identify ^{using old file} and give type numbers.

Believe it will be possible for AA to work also on the easy ones. Try to persuade ME to concentrate on Bourbonian stamps, no rest of file is relatively free.

26.XI.52 Came over with AA about 10:30, found ME set up to read in the sheltered ungrazed room (which is still not cleared). It is colder than outdoors, now without wind over today, but the builders are all over the place by the figures, with piles of sand and lime. [See 204.10, attached.]

The washed kinds which have not been touched are now in a heap on a girka near the entrance of this apartment. The heap is not much larger than that made by those



7.23b

26. XI. 52

National Museum, Avaratouki 1329 Eukias,

files of sand and lime when we were
supposed to work.

81608

which have been given type numbers. I see no prospect of their clearing soon this season, and think it will be best to keep the real bundles for the present in 4 heaps;

- ①. (Piles 1-19+) KT 1-400
 - ②. (" 20-40+) KT 401-900
 - ③. (" 41-61+) KT 901-1400
 - ④. (" 62-77) KT 1401-1805
- add ⑤ for the new types.

I'm sorting these from the present heap, try to find the bundles showing corrected types, which have been lost in the mules, not at first kept separate by me.

This plan seems to me altogether too cold and damp, and you should move now to the epigraphical section, where also we don't get held up by the bunches that stop in the passage and receive most from the ^{devotee} museum.

in the little "office" under, or during

[Took some sl...
much to dark, proto



which have been given type numbers. I see no prospect of their clearing soon this room, and think it will be best to keep the real bundles for the present in 4 heaps;

①. (Piles 1-19+) KT 1-400

②. (" 20-40+) KT 401-900

③. (" 41-61+) KT 901-1400

④. (" 62-77) KT 1401-1805

— add ⑤ for the new types.

I'm sorting these from the present heap, try to find the bundles showing corrected types, which have been lost in the miles, not at first kept separate by me.

This plan seems to me altogether too cold and damp, and you should move now to the epigraphical section, where also we don't get held up by the trucks that stop in the passage and receive most from the ^{double} upper old museum. I brought today a lamp; work can be done in the little "office" in the room to the right as one enters, or during sunny times out in the court.

(1. ATT. 52)
 [Took some ^{26 xi} shots of work in progress, but it was much too dark, probably nothing will come out.]



7.256

Natural Museum,

26. XT. 52. M₂. AA at work

on kitchen.

in the sheltered
unfurnished room
off the living room.

61.608

~~61.608~~

1. 74.52

on 27. XI, AA divided the numbered kinds into 4 heaps as planned. They bulk just about according to estimate. They are in a room with the cabinet, along the wall to the left of the present entrance.

MZ ^{has continued to} ~~worked~~ every morning at the museum, the only day missed since the start being 25. XI, when it was rather cold as well as wet. ~~press~~ AA stayed at the dig 28. XI, old kind files still being here, so inconvenient for him to read them. 29. XI we took them over, both for him and for MZ's greater convenience, because some ~~of~~ stamps are ~~either~~ easier to read with the other filing arrangement (spongy waste cards, etc. - the blue line). I needed the table for photography, so persuaded MZ to move to the little "office" in the Epigraph. Museum (within the room to the right of the entrance). Found she does not like to work there because the grand Alice is always trying to get her into conversation. Now both copies of the Ks. file are there, and the saints present a joy. (We do have the copied register, and the SS are in order.) AA had so many numbers to write, did not get any reading done. MZ went quickly through them she had read Christen 1949 ~~from the~~ - from the ^(Epigraph. Mus. coll.) 1st heap which they will mostly read now they have moved for to write - and gave them type numbers; they are very messy and

probably should be washed again.

I photographed, finishing Roll 204, and exposing 12 on Roll 205 (non-pulse start; - tone film putting it into camera, had to return to with Akko's sougia). ~~Since~~ The place planned was the inner room, where the ^{pl.} cabinet stands. The side light is good, but light as a whole is dimmer than I supposed: got readings only of about 2 1/2, more and less (partly cloudy) with the word of; seems doubtful if they are accurate way down there. I phot. a few Plesian, chiefly for the new sponge Eukleidas, for the sponge list; then began on the new Kuidia type from M2's current reading. The lack of light required such terribly long exposures, can't go very quickly. A very good place to phot. in winter is in the passage leading from the Eprigi. Museum to its court, because the sun strikes on the north wall of the court whenever there is any sun, and gives us good reflected ^{light} side ~~side~~ light. ^{Eighteen and 8 seconds, instead of 30 or 60!} Shall try it, but the trouble is, there is a good deal of truck traffic running through because of the building ^{going on} ~~putting in~~.

- 2. XII.52 get there at 12:00, photographed in the passage, finished roll 205. Interrupted by traffic of trucks for bldg operations
- 8. XII.52 M2 and AA have been at the museum daily. Today I started M2 on Roll 206; because of truck traffic, had to set up in room with Plesian cabinet, where exposures have to be long (but with good lighting) See got through about 24 pictures, beginning about 10:15.

Reading Kudain, she has finished the "oragguda kada";
and finished is working on the less-good round (from the
original lot).

5, 7. P. 53 See GENERAL account.

Ms think she has done about half the difficult-round.
They stopped working on these piles because it was too
old to wash them, and went on with the clean AAE,
bringing them in by basket full. There remain 2 or 3
baskets of the AAE Kudain still to do. Ms has exposed
most of Roll 206, and rolls 207-9, and today most of
210, not finished. Because of Emil's end-of-year accounting
problems, enlargements not made up to date, only through
Roll 206, which makes it more awkward for me to check.
It seems to be not ^{for ME-AAE work} cold in the little room where we leave the
files, so I have decided not to go back to finish until the
pictures are enlarged, and attached. In the case of ^{correct type} ^{having old KT nos.} ~~corrected~~,
Ms has not ordered the new cards ^{or corrections} from Miss K., but is
waiting to have the pictures, and do all at once, not to have
cards out of the files too long.

AA has just sorted [⊗] nearly up to date, and has been identifying
in notes home, he took Rolls 208, 209 & Emil. [⊗] i. e. the
general run into the 4 piles, as planned 26. XI. (see above p. 6,
front), and the superior examples, for photography, in long
lines along the floor, all in the room with the Plectrum cabinet.

14. I. 53 See again GENERAL account.

KT ILLUSTRATION -
PHOTOS NEEDED OF SS ITEMS

Checking Azusa examples of Prudic types.
(following alphabetizing of Prudic bundles)

- 1.) ^{cards} SS are taken out, using "shelf list", for 2 or 3 drawers at a time.
- 2.) A drawer is taken down, and the corresponding master and photograph cards ^{taken} from the vq copy of an index.

23. XI. 61

SS items

8.01

Check and supplement from items listed to USE on
4" x 6" KT cards in plast. file

- c.) " It is a better example than that illustrated!
- d.) " There is a secondary stamp on the handle.
- e.) " It is a fractional handle.

Numbers of them of which we should have enlargements made should be 1) listed and 2) written on phot. cards. Any ^{examples} wrongly listed with a type should be crossed off. Secondary stamps should be noted in citation on master cards, and have new secondary-stamp file cards.

If there are none, write this on front of master card.

- 4.) marking of SS cards with storage indication: 50-II-D
etc.
• as each bundle is checked, its card is marked.

- 5.) checking of content: Check finding-places from SS cards to index cards. Be sure there is no wrong indication, and no omission of possibly useful content from file cards.

(over)

23. XT. 61

(35) items

8.01

Check and supplement from items listed to USE on

4" x 6" K T cards in photo file

KT ILLUSTRATION -

PHOTOS NEEDED

OF SS ITEMS

Checking Azara examples of Krishna types.
(following alphabetizing of Krishna handles)

1.) SS ^{cards} are taken out, using "shelf list", for 2 or 3 drawers at a time.

2.) A drawer is taken down, and the corresponding master and photographs ^{taken} cards from the vq copy of the index.

3.) checking of examples:

Then handles are taken out one by one, and checked as to

- ✓ a.) whether the number is listed on the master card
- ✓ b.) " the stamp does in fact belong to the type
- ✓ c.) " It is a better example than the illustration
- ✓ d.) " there is a secondary stamp on the handle
- ✓ e.) " it is a fractional handle

Numbers of those of which we should have enlargements made should be 1) listed and 2) written on phot. cards. Any ^{examples} wrongly listed with a type should be crossed off. Secondary stamps should be noted in citation on master cards,

and have new secondary-stamp file cards.

If there are none, write this on front of master card.

4.) marking of SS cards with storage indication: 50-II-D

• as each handle is checked, its card is marked.

5.) checking of content: Check finding-places for SS cards

to index cards. Be sure there is no wrong indication, and no omission of possible useful content for file cards.

(over)

5 bis. Check reading on file card, to see if brackets in pencil are needed, or if we have the whole reading.

6. Check SS cards for headings (on lower margin)

7. SS cards may be put back into catalogue. Put in numerical order in our place if help available.

This work will be begun by MS now. But as soon as the alphabetizing is entirely finished — it now stops with the division *Ἀπὸ ταύτων* - *Ἐπαύσης* — she is to stop work on the deck, and first go through remaining catalogue handles which have not passed into alphabetical sequence.

Probably best for her to work through the SS cards now out in alphabetical order (through SS 6234 η *Ἀθροισμα*) so they can be put back into catalogue.

Then sort back the left-overs and the bin, before going on with the check here described.

8.8.52

5 divisions have been done by MS. Decided to do first the deck of catalogue unsorted, and of unsorted, so that series in division would be more final.

KT ill.

Plots. AS omitted & enter:

212.8 (KT 2, EM 1)

277.5 (KT 36, EM 5, whole jar)

Plots, SS certainly needed:

KT 6, SS 621, slid down but new plot., not to scale,

→ KT 13, SS 3217, better stamp of jar. Is it possible, then

was not done? See whole jar file.

maybe not to scale, new plot. needed?

→ ♥ KT 19, SS 3288, Does it need new plot.?

◇ KT 21, SS 2279 " " " " " "

→ KT 40, SS 1679, slid down and new plot. & bring out letter (W. L. ...)

KT 45, SS 10455, new plot. (of dau)

KT 57, SS 939, slid prob. down been new of.

KT 65, SS 10610, can this be better plot.?

KT 66, SS 5108 unless a better one, is of Algan,

KT 93, SS 5397 } " " " " " "

" SS 2812 repl.

→ KT 95, SS 4914 (repl.?)

KT 102, SS 2219, 3003

→ 103, SS 10655 (new plot.)

Composition drawings: (2)

26.8.55 [8.05]
F.M.

KT 146, see picture card (slips at Agon)

Please print on this stamp
is right side up (not oblique)

KT pairs: SS photographs

- KT 125 SS 6004 (new φ)
- KT 127 SS 2233 (for better line) SS 7177 (for rest)
- 131 SS 5949 (new φ?)
- 146 SS 6168 (old neg. possibly do - is on whole film)
- 151 SS 9614 (new φ? to show division is fixed)
- 152 SS 2658 (new φ)
- 155 SS 2950 (new φ, if handle looks good enough to use)
- 160 SS 8758 (new φ, if handle better) (for mt. and 9 st.)
- 168 SS 5706 (new φ, bright especially out in front)
- 179 SS 7781 (enlarged)
- 184 SS 6122
- 198 SS 6143, new φ? (and, make, not v. clear, and division scarcely shows)
- 199 SS 2025 for division, new φ
- 213 SS 3856, new φ - but dark, old SS & size of bill
- 214 SS 11362 try just asking for an enlargement?
(the new one has is not to scale)
- 215 SS 10227 (new φ, - old one is oversize and tipped)
- 217 SS 2304 (new φ)
- 218 SS 10966 new φ? (old one is good but under size)
- 228 SS 5680? old φ spotted
- 233 SS 5937 need to show all flaws, and size imp.
- 237 SS 5685 (best use of int. types)
- 246 SS 5264

check print of 233

KT	255	SS	4295	new ϕ
	267	SS	4372	" "
	269	SS	4810	" "
	273	SS	3897	" "
			903	" "
	276	SS	5806	" "
	280	SS	9762	" "
	284	SS	5175	" "
	287	SS	6449	" "
	290	SS	6017	" "
	291	SS	5994	" " ? old on <u>small</u>
		SS	6371	? " "
	297	SS	4524	} ? existing parts are jagged
		SS	4819	
	298	SS	2673	? check other SS
	302	SS	2369	
	315	SS	5625	new ϕ
	325	SS	8532	for the <u>diver</u> - <u>incl.</u> ?
	327	SS	6654	" " " and upper right - <u>incl.</u> ?
	334	SS	5788	new ϕ
	345	SS	686	? check SS & show M of 1st div
	350	SS	1244	new ϕ
	354	SS	7772	new ϕ
	356	SS	2000	new ϕ for <u>diver</u>
	358	SS	4409	new ϕ for <u>most of stamp</u>
	359	SS	8165	new <u>incl.</u> ?
	361	SS	5254	new ϕ ?
	362	SS	1503	new ϕ

→ check yltm
is to make sure
- with other SS?

check SS

check SS

3 bis (suppl.)

25.8.55

8.07

SS for phot. from KT ill. (suppl.) (Listed at Agony)

KT 301 SS 8654 (mostly end. in small, and slender in

307 SS 2915 } new φ. (only spec. of type)
4202 }

308 SS 2054, new φ

SS 13662, prob. end.

317 SS 3945, hole stamps

334 SS 5887 new φ

336 SS 13434 end. (? spec. ok. Not stored.)

342 SS 4342 } new φ. s
8192 }

345 SS 686

(349 SS 10338 long an end. ?)

See which book
with name
end. of EM 2 → 355 SS 7218 and/or SS 11628 new φ ?

	KT 367	SS 5909	new ϕ new ϕ and letter below
	372	5068	new ϕ
	373	7648	" "
		10349	" "
	375	13170	" " (for letter of left)
	? 377	11385	" " ^{end} single light and
	378	7643	" " ^{small} old part of good and (the other is & used in incomplete)

14.IX.54

	→ 387	4336	<u>poly-epi</u>
	388	122	(new ϕ)
	389	1971	" "
		2600	" "
		8115	(end.)
	390	4371	(new ϕ) (other ^{also} at b. letter in new ϕ s)
		8599	(end.)
	391	13295	(end.)

12.IX.57

(later)

	427	SS 4968	new ϕ
	431	SS 5965	" "
	432	7793	for top line of light - new ϕ ep.

8.09

29.VIII.55 - continuation before

KT illustration - SS

8.10

↑ all of them are
roll 585

SS prints needed for KT, II, no drawings
continuation from January list

New ϕ -	SS	3185 ✓	KT 751	Ορυδα φιδεπας
New ϕ -	SS	1145 ✓	KT 752	Ορυδα φιδεπας
ϕ -	SS	5069 ✓	KT 754	"
New ϕ -	SS	1378 ✓	KT 755	"
ϕ -	SS	4241 ✓	KT 756	"
new ϕ -	SS	4694 ✓	KT 757	"
ϕ -	SS	13306 ✓	KT 1841	" - λαγυρα
	SS	6166 ✓	KT 763	Παιδ. Ορυδαφιδεπας
new ϕ -	SS	2439 ✓	KT 766	"
	SS	7994 ✓	KT 776	"
ϕ -	SS	7004 ✓	KT 1843	"

12.IX.59

Not to be continued from the index, which was an emergency measure before Alexandri trip. Will work for KT checks.

945 bis

8.09

KT illustration - SS

X.10
- Still needed
↑
all of them are on
Roll 585

SS prints needed for KT, II, no devices
Continuation for January list

New φ -	SS	2485 ✓	KT 751	Θρονα φιδυτος
New φ -	SS	1145 ✓	KT 752	Θρονα φιδυτος
φ -	SS	5069 ✓	KT 754	"
New φ -	SS	1378 ✓	KT 755	"
φ -	SS	4241 ✓	KT 756	"
new φ -	SS	4694 ✓	KT 757	"
φ -	SS	13356 ✓	KT 1841	" - Kaxi...
	SS	6166 ✓	KT 763	Παδ. Θρονα φιδυτος
new φ -	SS	2459 ✓	KT 766	"
	SS	7994 ✓	KT 776	"
φ -	SS	7004 ✓	KT 1843	"

12. IX. 59

Not to be continued from the index, which
was an emergency measure before Alexandri
trip. Will work for KT checks.

945 bis

The Illustration of Kurein Types

In preparing for trip to Alexandria, realized it would be necessary to know as far as possible, when deciding what to photograph there, what pictures were already available. The 4" x 6" file of photos by KT too heavy and bulky to be taken as such. They must be selected, and added to picture cards.

Another necessary job could be done at the same time: the selection of enlargements to be ordered from Agnes negatives, mostly items which had been somewhat enlarged before the war, and both examples had never turned up, of their types.

At the same time, a list was made of types best illustrated for Benaschi collection, so that they may be quickly identified there.

I made a beginning of this check on January 1st, and continued Jan. 3. MS at first attended with me, and there was managed to work together, on day type without device — the check was made from the file, ^{starting with} first the devices. AA worked a bit also, on the type without device.

The list of Benaschi items goes with us to Alex. The list of SS items remains. XA got out the ^{SS} cards,

"Add any
other examples
from KT file."

"Note, if half-
enlarged Agnes
example is best
and should be
ordered."

"Note, if Benaschi
example is best
and should be
photographed."

and put them in numerical order (SS) today.
MAF hopes to be able to get the enlargements made fairly soon. Some to be reprinted, may be longer delayed.

The check could not be completed, time not sufficient. Completed were: divisions in rectangular stamps, and two drawers of names, through about Broda (- an exact place will show in the lists of needed items.

Remain to be done: nearly two drawers of names, and the circular stamps. Those with boudoirs are less serious, since there seem to be few in Alex (of Benadi collection).

3. III. 55

On our return from Alexandria, find both prints of old negs, and new negative have been made, except for a few items which could not be found.

Probably best not to order more until Alex. plant house has been processed - may include both exp.

30. VIII. 55

The processing was finished recently. Yesterday a start made on checking for plants, interrupted because the files are to be taken to N. Mus., to finish ident. then will get on other

See also of parts, ask
Anderson for the original list,
not in numerical order.

Were done
d. S. III. 55
m attached 7, I. 55
paper
8.13

Agora Superior Examples of Kindsia Types
actual-size
for enlargement for publication

(selects from pre-war illustrations of vases,
small-size enlargements)
may we please have two copies of each, 6x9, in

stamp in the middle?

55	55	55	55	55	55	55	55
513 ✓	1148 ✓	2054 ✓	2691 ✓	3321 ✓	3934 ✓	4335 ✓	4855 ✓
599 ✓	1209 ✓	2059 ✓	2719 ✓	3334 ✓	3938 ✓	4372 ✓	4856 ✓
621 ✓	1357 ✓	2105 ✓	2831 ✓	3418 ✓	3960 ✓	4410 ✓	4866 ✓
640 ✓	1430 ✓	2175 ✓	2906 ✓	*=Q? 3423 ✓	4002 ✓	4424 ✓	4873 ✓
710 ✓	1457 ✓	2187 ✓	2913 ✓	3468 ✓	4028 ✓	4440 ✓	4874 ✓
715 ✓	1480 ✓	2252 ✓	2929 ✓	3488 ✓	4051 ✓	4516 ✓	4887 ✓
801 ✓	1520 ✓	2264 ✓	2935 ✓	3529 ✓	4112 ✓	4524 ✓	4893 ✓
841 ✓	1568 ✓	2356 ✓	2945 ✓	3551 ✓	4117 ✓	4539 ✓	4916 ✓
850 ✓	1583 ✓	2390 ✓	2948 ✓	3585 ✓	4152 ✓	4586 ✓	4939 ✓
891 ✓	1679 ✓	2412 ✓	3025 ✓	3650 ✓	4182 ✓	4594 ✓	4989 ✓
939 ✓	1700 ✓	2561 ✓	3039 ✓	3676 ✓	4201 ✓	4604 ✓	4990 ✓
946 ✓	1702 ✓	2624 ✓	3117 ✓	3729 ✓	4207 ✓	4646 ✓	5019 ✓
950 ✓	1758 ✓	2647 ✓	3128 ✓	3743 ✓	4224 ✓	4649 ✓	5068 ✓
972 ✓	1928 ✓	2655 ✓	3131 ✓	3770 ✓	4238 ✓	4698 ✓	5108 ✓
1015 ✓	1984 ✓	2661 ✓	3146 ✓	3788 ✓	4295 ✓	4810 ✓	5144 ✓
1070 ✓	1971 ✓	2673 ✓	3296 ✓	3890 ✓	4318 ✓	4819 ✓	5175 ✓
1077 ✓	2052 ✓	2678 ✓	3320 ✓	3897 ✓	4328 ✓	4820 ✓	5183 ✓

* Those that seemed to us to need new photographs are to
be marked by XA with a star.

SS prints needed for KT, I

✓ <u>new φ</u>	SS	√801*	(KT 824)	
—	SS	(unrec.)	(KT 378)	Δημ. of Πολυκάρου
<u>Andros</u>	SS	√5144	(KT 664)	Εὐφροσ. of Σωσφ.
	SS	√5966	(KT 725)	Θεός. of Ἀνταρ.
	SS	√4856	(KT 1029)	Μοσχ. of Πυθών.
	SS	√6794	(KT 1497)	Ἄγν. Ἐρμωφ. andros pl. c.
	SS	√2054	(KT 308)	Ἄσκ. of Πτολ.
	SS	√8126	"	" " "
	SS	√4182	KT 1659	Ἄσκ. Εὐφρα, Εδουθ (for dwin)
	SS	√6006	KT 377	Δημ. of Κλασάρ.
	SS	√6260	KT 726	Θεός. of φρ. Ἀριστέλης
✓ <u>new φ</u>	SS	√1583	KT 886	Κλασ. of Πυθών. (for dwin)
✓ <u>new φ</u>	SS	√4646	KT 1643	Ποδότης. Κρότυς
(pt. nt.)	SS	√5908	KT 246	Ἄριστ. of Δαίδ.
	SS	√5183	KT 274	Δημ. of Ἀρμω(?)
	SS	√2390	KT 444	Διονύς. of Κλασ.
	SS	√5765	KT 727	Θεός. of Ἀσκληπ. (for dwin)
✓ <u>new φ</u>	SS	√9769	KT 732	" " Θεόδωρος
(φθου. and dwin)	SS	√6162	KT 735	" " Κλασ.
	SS	√2264	KT 1619	Ἰκκ. - Κλασ. (for dwin)
	SS	√2719	KT 1743	Δημ. []
pt. dwin	SS	√5483	KT 738	Θεός. of φιδτα

<u>bar</u>	SS	✓ 6122	KT 184	Απ. Π.α.
	SS	✓ 5410	KT 226	Άριστογ. (-f) Λυσαν.
	SS	✓ 6032	" "	" "
	SS	✓ 5697	KT 347	Δαμοκ (
✓ <u>mus of</u>	SS	✓ 2175	KT 348	" ←
	SS	✓ 4028	KT 406	Δ.ο.ν.
	SS	✓ 1077	KT 1748	unread
<u>bee</u>	SS	✓ 621	KT 6	- Αγαθίω, Ακαοίχης
	SS	✓ 3095 } ✓ 5651 }	KT 1632	Κρατερός- Νικασίβουχος
<u>book</u>	SS	✓ 4740	KT 167	Απολλώνιος, ep. Αριστοκρίτου
	SS	✓ 2789	KT 178	Απολλώνιος, ep. Ευποκράτους
	SS	✓ 5509	KT 314	Αστυνόμοσ
	SS	✓ 1200	KT 319	" ep. Ερμιόφαντος
	SS	✓ 4586	KT 320	" ep. "
✓ <u>new photo</u>	SS	✓ 2561	KT 328	Άγαθίωχος ep. Μένιππος
<u>book</u>	SS	✓ 2913 } ✓ 6169 }	KT 407	Διονύσιος
	SS	✓ 4201	KT 1014	Μόρφης, (ep) Εὐποκράτους
✓ <u>new photo</u>	SS	✓ 3529	KT 1022	Μόρφης ep. Σωκράτους
✓ <u>mus photo</u>	SS	✓ 1148	KT 1024	" ep. Φίλιππος
<u>book</u>	SS	✓ 6159	KT 1188	Σκλερσίω (ep) Αρτέμιων
"	SS	✓ 3743	KT 1178	" (ep) Θείδοτος
"	SS	✓ 5308	KT 1269	Χαρροκράτους, ep. Εὐτραγόρας
"	SS	✓ 4866	KT 1636	Νικασίβουχος- Κρατερός

branch

SS ✓ 4318

KT 1570

βιγόνι - Διονύσιος

caduceus

SS ✓ 5175

KT 284

Απίστων, επ. Κυρπαρος

SS ✓ 5581

KT 285

" επ. Αυστηλίας

SS ✓ 55017

KT 531

Αωσιθρος, επ. Ασκυτιδής

SS ✓ 59415

✓ new photo?

SS ✓ 5729

KT 1662

Ζυρόδοτος επ. Κηρύβερος

SS ✓ 5750

KT 676

Χνίοχος επ. Επιχαρκος

SS ✓ 2105

KT 716

Θεΐδαμος επ. Αγαθοκλή

SS ✓ 4424 + ✓ 4440 (pair)

KT 873

Καχιδάμας - επ. Πόλιος

SS ✓ 2187

KT 887

Κχειτοφών - επ. Ταυρίσκος

SS ✓ 4990

KT 913

Κχίων, επ. Δίων

SS ✓ 6023

KT 922

Κυδοκράτης επ. Αμύκτας

✓ new photo?

SS ✓ 4152

KT 1084

Μικίαν επ. Κυνύτοχης

SS ✓ 4873

KT ~~4873~~ 1194

Σεραϊρας επ. Κηρύβερος

✓ new photo?

SS ✓ 2624

KT ~~2624~~ 1765

caduceus, and dolphin not read

club

SS ✓ 6196

KT 116

Αραβαρδ. επ. Ευφρατος

SS ✓ 2412

KT 118

" " Καλλιδίμος

SS ✓ 4335

KT 343

" " Πόλιος

SS ✓ 5564

KT 384

Δύμπος " Διογένης

Καίσα?

SS 5431

KT 448

Διανν (ep) Λυγαρι

" ?

SS 11890

KT 448

" " "

✓ unuplod

SS ✓ 850

KT 451

" " Ξωκρά

SS ✓ 3146

KT 956

Μαργαρίτ, επ. Φελακί

SS ✓ 4698

KT 957

" " "

(1)

	SS	✓ 2691	KT	1766	mus., with dub
✓ mus. ♂	SS	✓ 715	KT	1767	"
cluster n. n. n. → mus. ♂	SS	✓ 3320	KT	56	Ἀθηναῖος, (φ) Βαυκ.
	SS	✓ 3131	KT	221	Ἀριστῶν, φ[?]
*	SS	✓ 2948	KT	1359	φ. Διόσκου
	SS	✓ 3117	KT	1274	Χαρμακ. φ. Κλαυδίου
	SS	✓ 4516	KT	1276	" " Φιλίππου
	SS	✓ 4328	KT	1598	Ἄνδ. Λαχ. Εὐπίου
	SS	✓ 3488	KT	1295	φ. Ἄγία Ἀρτ. Ἀριστοκ.
	SS	✓ 1457	KT	1157	Ποχόνικος, φ. Αριστοκράτους
	SS	✓ 5965	KT	1613	Ἄνδ. Πασ. Μίσκου
	SS	✓ 690	KT	144	Ἀπολλόδοτος φ. Ἄγίας
	SS	✓ 4820	KT	1541	Ἄρτ. Αριστοκλῆς
	SS	✓ 939	KT	57	- Ἀθηνῶν φ. Ἐπιφάνους
	SS	✓ 4874	KT	697	Θευξίμης, φ. Θεαίδου
	SS	✓ 513	KT	708	Θευξίμης φ. [?]
	SS	✓ 5594	KT	1233	Τέχνων φ. Κυδοκλής
	SS	✓ 3296	KT	498	Δοξαῖος
herm	SS	✓ 1702	KT	70	ΑΘ/Θνα
	SS	✓ 2673	KT	298	- Αρχαῖος φ. Ποχίμης
	SS	✓ 3650	KT	1679] ΕΡΜΩ[
	SS	✓ 15687	KT	650	Εὐφρανίδης φ. Ανδρονίκου
	SS	✓ 4989			
	SS	✓ 4594	KT	780	Θεύνομος
	SS	✓ 4539	KT	1709	Μικχάου φ. Διονύσιου

helm	SS	✓ 1430	KT 1086	Μικράτος ep. Ευφραγόρας
	SS	✓ 3938	KT 1163	Προχρηάτος ep. ?
✓ new photo?	SS	✓ 4410	KT 1500	Αγνός. Εφράσσας
	SS	5397	KT 93	Αίριος ep. Αππαρχος
	SS	✓ 3960	KT 571	Επιφάνης, ep. Σωσίφρων
	SS	✓ 3334	KT 1204	Σώσιος ep. Δίων
Isis emblem	SS	✓ 3468	KT 1314	Αριστόδαμος ep.
lion's head	SS	✓ 5019	KT 575	Επιφάνης, ep. Χρυσίππος
oar	SS	✓ 4051	KT 1129	Ξενοκλής, ep. Αποδείξος
✓ new photo palm tree	SS	✓ 3039	KT 552	Ελικών(η) & Δαμιοκρίτος
prow	SS	✓ 2935	KT 1644	Ποχίρας και Κράσιος
	SS	✓ 4916	KT 651	Είφρανείδας ep. Εφρων
	SS	✓ 26487	KT 652	3 ep. Τισίσιος
	SS	✓ 5424		
	SS	✓ 6024	KT 1653	Τυνάδας + Τυθόκριτος
	SS	✓ 6143	KT 198	-Αριστάνδρος ep. Θευφών.
half ship	SS	✓ 1070	KT 1114	Ξάνθος ep. Βίων.
	SS	✓ 3676	KT 449	Αιονίδης ep. Μενεκράσιος
thyrus	SS	✓ 5621	KT 994	Ανοίας
	SS	✓ 3770	KT 945	Ανοίας ep. Ευφρ()
tree	SS	✓ 4893		
	SS	✓ 2831	KT 879	Καρυσάδας ep. Εφρων
trident	SS	✓ 5474	KT 39	Αθανόκριτος, Τεχεκρέων
	SS	✓ 5190	KT 270	-Αριστοκράσιος, Σωκράσιος
	SS	✓ 3894	KT 273	Αριστόνικος ep. Ποχίσιος
	SS	✓ 5625	KT 315	Αουκυστιόδωρος, ep. Αθαβουκίος

(6)

trident	SS √3321	KT 335	Βόρπυς, ep. Αποχώνιος
	SS √5068	KT 372	Αμφύροπος ep. Αρσέ(μων)
	SS √3934	KT 395	Διόδωτος ep. Τιμασίπρασος
	SS √6125	KT 412	Διονύσιος ep. Αγαθονυχ(ης)
	SS √5405	KT 583	Επιών ep. ?
	SS √4224	KT 617	Εύβογος
	SS √3585	KT 618	Εύβογος ep. Αρσίμων
	SS √891	KT 621	" ep. Εύκράτος
	SS √4855	KT 630	" ep. ?
	SS √5967	KT 1226	Σωζίων Σωσίπρασος
	SS √1209	KT 1394	Θεαίδωτος, ep.
device	SS √1679	KT 40	ΑΘύν()
	SS √5953	KT 48	-Αθίνας
	SS √5821	KT 49	"
	SS √5108	KT 66	-Αθί()Ναί
	SS √9503	KT 67	" "
	SS √2059		
<u>new Φω.</u>	SS √599	KT 777	Θουκχίς, ep. Διοκχίς
	SS √1984	KT 669	Ευφρόσυνη, ep. Φίτζωνος
	SS √5691	KT 1422	Κυσίβροτος, ep.
	SS √7253	KT 1151	Περίγιγνυς, Δράκων, ep.
	SS √4002	KT 1201	Σώβος

Please return
SNG

6.1.55
by
[8.21]

SS prints used for KT, II (no dupes)

SS ✓2945 KT 4

* SS ✓3423 KT 28 Ἀγαθ. ἐφ. 21997.

~~SS ✓3997 KT 81 Ἀθῶν. ἐφ. 11020.~~

View of SS ✓1928 KT 82 Ἀθῶν. ἐφ. (?)

SS ✓2655 KT 1299 ἐφ. Ἀραβ. ἀνδρ.

SS ✓6132 KT 1305 ἐφ. Ἀντ. π. π. π.

View of SS ✓4887 KT 177 Ἀθῶν. ἐφ. 11020.

View of SS ✓4939 KT 1307 ἐφ. Ἀραβ. ἀνδρ.

View of SS ✓4112 KT 1311 ἐφ. Ἀγῶν

SS ✓3128 KT 186 Ἀριστοτ. ἐφ. Ἀρ. π. π.

View of SS ✓2052 KT 200 Ἀριστοτ.

View of SS ✓710 KT 213 " ἐφ. Λυσανίας

SS ✓5680 KT 228 Ἀριστοτ. ἐφ. Νικ. ἀνδρ.

SS ✓3890 KT 231 " " ἐφ. 11020

SS ✓5937 KT 233 Ἀριστοτ. κ. π.

SS ✓4372 KT 267 " ἐφ. Σοφ. Ἀρ.

SS ✓4295 KT 255 " ἐφ. " Εὐφροσύνη

SS ✓4810 KT 269 Ἀριστοτ. ἐφ. Λυσανίας

SS ✓2906 KT 271 3 " ἐφ. 11020

View of SS ✓4117 KT 272 Ἀριστοτ. ἐφ. Πλάτωνος

SS ✓2929 KT 1323 ἐφ. Ἀριστοτ. ἀνδρ.

SS ✓5994 KT 292 Ἀρχαῖ. ἐφ. Ἀθῶν

	SS √4524	KT 297	Ἄρκος φ. Πολίτ,
	SS √4819	" "	" "
	SS √2661	KT 311	Ἄσκλησι (φ) Ἴασι.
<u>new φ</u>	SS √946	KT 346	Δαμαράτος
	SS √1971	KT 389	Διόδωρος, Κράκιερ.
	SS √2647	KT 398	Διονύσιος (retr.)
	SS √5589	KT 456	Διονύσιος Εωσίφρων, επ.
	SS √841	KT 466	Διονύσιος [?] επ.
	SS √1758	KT 467	" "
<u>New φ</u>	SS √972	KT 468	Διονυβώδωρος
	SS √3551	KT 470	Διονυβώδωρος
	SS √3418	KT 502	Δρακοντομήνης
	SS √3729	KT 504	Δρακοντομήνης, φραγο) Κλεινόποδης
	SS √1357	KT 505	Ἄρκων
	SS √1480	KT 507	"
	SS √5956	KT 1357	" , επ.
	SS √4649	KT 605	Ἐρμώφοντος Ἐρμων, επ.
	SS √5243		
	SS √5212	KT 619	Εὐβούλος) Δομο(, επ.
<u>new φ</u>	SS √1520	KT 643	Εὐκρα δαμ. Νικασι
	SS √4238	KT 1387	επ. Εὐφραχόρας
	SS √5299	" "	
<u>new φ?</u>	SS √2252	KT 653	Εὐφρόνας επ. Ἰερακλῆς

(3)

8.23

no swim

SS ✓4207 KT 742 Orusa, E3upa

V new φ

SS ✓1015 KT 746 " Aupa

V new φ

SS ✓2356 KT 747 " Myto

SS ✓4604 KT 748 " Nik

19.8.63

List of needed pictures

(1)

9. II. 53-

✓ on list of 7.I.55, and done, which we were in Alys.
List as a whole apparently never done, and now we would need to recheck.

KT 1	SS 3311(s), 8385, 9198	KT 51	SS 2582(s)
KT 4	SS 2945(s) ✓	KT 52	SS 8097(s)
KT 6	SS 621(s) ✓	KT 56	SS 3390(s)
KT 7	SS 460(s) ←	KT 57	SS 939(s)
KT 9	SS 2649(s) ←	KT 62	SS 5492(s)
KT 10	SS 5914(s) ←	KT 65	SS 5535
KT 12	SS 3940(s) 9160	KT 66	SS 5108(s)
KT 14	SS 3217(s) ← on which for	KT 73	SS 5137(s)
KT 17	SS 9819	KT 67	SS 950(s)
KT 19	SS 3288(s) ← (now)	KT 70	SS 1702(s), 239(s) 8646
KT 20	SS 6041	KT 71	SS 261(s)
KT 21	SS 2279(s) ←	KT 80	SS 4744
KT 27	SS 4067(s) ?	KT 82	SS 1928(s)
KT 28	SS 3423(s) ✓	KT 85	SS 2633 (very damaged?)
KT 1285	SS 4374(s)	KT 88	SS 3433(s)
KT 34	SS 2407 (take again or same Kor. example)	KT 89	SS 8682
KT 35	SS 1059(s)	KT 90	SS 7057 (this is from MG picture from a well preserved stamp but for a while in collection (roll 2/12))
KT 1504	SS 3445(s)	KT 93	SS 5397(s), 2812(s)
KT 38	SS 3091(s)	KT 95	SS 8508
KT 39	SS 5477(s) ✓ (go on check from here)	KT 96	SS 8105(s) (empty case might be but from roll 2/12)
KT 40	SS 1679(s) ← now p	KT 99	SS 10648
KT 41	SS 5321(s) 2480	KT 102	SS 2219(s), 1113 and 2375? (preserved - absence of modern)
KT 46	SS 2092	KT 103	SS 4368, 5891
KT 48	SS 5953(s)	KT 1302	SS 11231
KT 49	SS 5821(s)	KT 1301	SS 5297(s)

KT 107	EM ex. Roll 212 (many)	KT 1307	SS 4939(s)
KT 110	SS 5527(s)	KT 1311	SS 4112(s)
KT 116	SS 6196(s)	KT 148	SS 6143(s) 6940
KT 118	SS 2412(s) 9641	KT 200	SS 2052(s)
KT 121	SS 303(s)	KT 201	SS 440 (no picture on file) = p.u.g
KT 1300	SS 1258(s)	KT 203	SS 5869
KT 1299	SS 2655(s)	KT 206	SS 4233(s)
KT 125	SS 6004(s)	KT 210	SS 6443
KT 128	SS 2233(s)	KT 213	SS 3856(s)
KT 128	EM. examp. Roll 212 (many)	KT 216	SS 2545(s)
KT 131	SS 5949(s)	KT 217	SS 2304(s)
KT 554	SS 2795(s)	KT 221	SS 3131(s)
KT 1305	SS 6132(s)	KT 1529	SS 8690
KT 144	SS 640(s)	KT 226	SS 5410(s)
KT 145	SS 8603 (neck handle not mended)	KT 228	SS 5690(s) 11.11.54
KT 153	SS 3448(s)	KT 231	SS 3890(s)
KT 156	SS 3065(s)	KT 232	SS 6085(s)
KT 161	SS 277(s)	KT 237	SS 5686(s)
KT 172	SS 3788(s)	KT 238	SS 2592(s) or 7882
KT 177	SS 4887(s)	KT 239	SS 4280(s)
KT 180	SS 7617	KT 240	SS 6538, 4474(s)
KT 181	SS 5772(s)	KT 242	SS 3338(s)
KT 183	SS 517(s)	KT 244	SS 11159
KT 184	SS 6122(s)	KT 245	SS 1067(s) 9151

(2)

KT 246	SS 5264(s) 5908(s)	KT 320	SS 4586(s)	
KT 255	SS 4295(s)	KT 325	SS 2373(s)	12/1/54
KT 258	SS 6864	KT 1329	SS 971(s), 5634(s)	
KT 263	SS 4248(s)	KT 328	SS 2561(s)	
KT 269	SS 4810(s)	KT 329	SS 2528(s)	
KT 270	SS 5190(s)	KT 1659	SS 4182(s)	
KT 271	SS 2906(s)	KT 334	SS 5788(s)	
KT 272	SS 4117(s)	KT 335	SS 3321(s)	
KT 273	SS 3897(s)	No KT	SS 5020(s) ?	
KT 1323	SS 2929(s)	KT 342	SS 6342(s)	
KT 284	SS 5175(s)	KT 343	SS 4335(s)	
KT 285	SS 3046(s)	KT 345	SS 686(s)	
KT 289	SS 3887(s)	KT 346	SS 946(s)	
KT 290	SS 6017(s)	KT 347	SS 5697(s)	
KT 292	SS 5994(s)	KT 348	SS 2175(s)	
KT 297	SS 4819(s)	KT 354	SS 8809	
KT 298	SS 2673(s)	KT 1552	SS 8108(s)	
KT 307	SS 2915(s) 4202(s) ^{bad examples}	KT 355	SS 7218	
KT 308	SS 8126(s)	KT 356	SS 2000(s)	
KT 309	SS 4941(s)	KT 358	SS 4409(s)	
KT 311	SS 2661(s)	KT 359	SS 8165(s)	
KT 314	SS 5508(s)	KT 360	SS 3019(s)	
KT 315	SS 5625(s) ?	KT 362	SS 1503(s)	
KT 319	SS 1760(s)	KT 367	SS 5909(s)	
		KT 366	SS 6771, 2640(s)	

KT 1340	SS 4907(s)	KT 445	SS 4803(s) 3219 (on the last measurement hand)
KT 369	SS 2376(s) 5438	KT 427	SS 5835, 4968(s)
KT 374	SS 5183(s)	KT 431	SS 5965(s)
KT 372	SS 5068(s) 6407	KT 432	SS 4561(s)
KT 373	SS 10349	KT 433	SS 3325(s)
KT 376	SS 4221(s) ? (new ex. better) SI 2729 ?	KT 434	SS 6113(s)
KT 377	SS 6006(s)	KT 436	SS 2660(s), 3040(s)
KT 1552	SS 354(s)	KT 438	SS 3075(s), 11437 (?)
KT 384	SS 5564(s)	KT 439	SS 4975(s) 10523 (?)
KT 1343	SS 5933(s)	KT 444	SS 2390(s)
KT 386	SS 4145(s)	KT 447	SS 482(s), 1545(s)
KT 387	SS 4336(s)	KT 448	{SS 2998(s)}
KT 1513	SS 11568	KT 449	SS 3676(s)
KT 388	SS 122(s)	KT 450	SS 3944(s)
KT 1345	SS 958(s) 7462,6	KT 451	SS 8104(s)
KT 397	SS 189(s)	KT 454	SS 998(s)
KT 398	SS 2647(s)	KT 455	SS 850(s)
KT 400	SS 6147(s)	KT 456	SS 5589(s)
KT 406	SS 4028(s)	KT 460	SS 841(s)
KT 407	SS 6164(s)	KT 467	SS 1758(s)
KT 408	SS 1581(s)	KT 470	SS 3551(1) 13.1154
KT 412	SS 6125(s)	KT 468	SS 972(s) 9255
KT 421	SS 4684(s)	KT 473	SS 10298
		KT 478	SS 11128, 5895(s), 7108

3

KT 479	SS 3679(s) 257(s), 5006	KT 527	SS 5586(s)	15.11.54
KT 480	SS 4072(s) 10214	KT 531	SS 5941(s)	
KT 481	SS 9972	KT 1677	SS 6063(s)	
KT 482	SS 3249(s)	KT 532	SS 9343	
KT 483	SS 3417(s)	KT 538	SS 3403(s), 4969(s)	
KT 484	SS 2965, 3623	KT 539	SS 5551(s)	
KT 485	SS 9474	KT 549	SS 2757(s)	
KT 488	SS 10468	KT 551	SS 2397(s)	
KT 489	SS 8890	KT 552	SS 3039(s)	
KT 490	1148(s), 5853	KT 553	SS 1678(s) 5794(s)	
KT 498	SS 3296(s)	KT 555	SS 4922(s)	
KT 499	SS 4770(s) 5267	KT 556	SS 4924(s) 3090(s)	
KT 502	SS 3419(s)	KT 557	SS 1079(s)	
KT 504	SS 3729(s)	KT 558	SS 9139	
KT 1355	SS 9148	KT 1362	SS 4104(s)	
KT 505	SS 1357(s)	KT 565	SS 3471(s)	
KT 507	SS 1480(s)	KT 566	SS 2160(s)	
KT 508	SS 324(s)	KT 568	SS 8741	
KT 509	SS 537(s) 5805(?)	KT 570	SS 4421(s)	
KT 519	SS 210(s),	KT 571	SS 3960(s)	
KT 520	SS 1544(s)	KT 573	SS 5394(s)	
KT 523	SS 126	KT 575	SS 5019(s)	
KT 526	SS 4592(s)	KT 581	SS 9757 (unk - no good picture stamp and postmark)	
KT 1357	SS 5956(s)	KT 583	SS 5405(s)	

KT 586	SS 4164(s) 8496	KT 633	SS 6176, 1374(s)
KT 585	SS 2062	KT 634	SS 1783 (s)
KT 594	SS 5984(s)	KT 635	SS 1401(s) 1529
KT 595	SS 5210, 2951, 2485	KT 649	SS 5012(s)
KT 596	4429, 9616	KT 643	SS 1520(s)
KT 600	SS 8954, 11219	KT 1658	SS 466(s)
KT 601	SS 90(s)	KT 1321	SS 5752(s)
KT 603	SS 9539(s)	KT 647	SS 4054(s)
KT 605	SS 4649(s), 5243(s)	KT 648	SS 2272 (both stamps)
KT 607	SS 3650(s)	KT 1385	SS 5534(s)
KT 607	SS 5004(s)	KT 1386	SS 10621
KT 608	SS 3319(s)	KT 1327	SS 4238(s), 5299(s)
KT 610	SS 3850(s)	KT 650	SS 1568(s), 4987(s)
KT 611	SS 4523(s)	KT 651	SS 4916(s)
KT 614	SS 8305,	KT 652	SS 2678(s), 5424(s)
KT 615	SS 3028(s)	KT 653	SS 2252(s)
KT 618	SS 3585(s)	KT 1718	SS 7793(s)
KT 619	SS 5212(s)	KT 654	SS 3764(s)
KT 620	SS 9707	KT 655	SS 6106(s)
KT 621	SS 891(s)	KT 663	SS 5668(s), 6052
KT 629	SS 3993(s)	KT 664	SS 5144(s)
KT 630	SS 4855(s)	KT 667	SS 4575(s)
KT 632	SS 4508	KT 669	SS 1984(s), 8805
KT 1321	SS 4010(s)	KT 671	SS 2420(s), 5894(s)
KT 1372	SS 1913(s)		

(4)

KT 1662	SS 5799(s)	KT 730	SS 4813(s)		
KT 675	SS 4873(s)	KT 735	SS 6162(s)		
KT 676	SS 5750(s)	KT 736	SS 48(s)		
KT 677	SS 2037(s)	KT 738	SS 5483(s)		
KT 1680	SS 8306	KT 739	SS 5985(s)		
KT 680	SS 2811(s)	KT 741	SS 1313(s)		
KT 684	SS 5793(s)	KT 742	SS 4207(s)		
KT 688	SS 4304(s)	KT 746	SS 1015(s)		
KT 689	SS 11367(?)	KT 747	SS 2356(s)		
KT 691	SS 290(s)	KT 748	SS 4604		
KT 693	SS 3552(s)	KT 754	SS 5069(s)	5155	14.71 59
KT 694	SS 3887(s)	KT 752	SS 1145(s)		
KT 697	SS 4874(s)	KT 755	SS 1378(s)		
KT 708	SS 513(s)	KT 756	SS 4241(s)		
NO KT	SS 13016	KT 757	SS 4694(s)		
KT 714	SS 2641(s)	NO KT	SS 1290(s)		
KT 716	SS 2105(s)	KT 1404	SS 5229		
KT 721	SS 6185(s)	KT 777	SS 599(s), 9645		
KT 1396	SS 4655(s)	KT 778	SS 3588(s), 4988(s)		
KT 724	SS 167(s)	KT 779	SS 6324, 8172(s), 4791(s)		
KT 725	SS 5966	KT 780	SS 4594(s)		
KT 726	SS 6260(s)	KT 781	SS 3929(s)		
KT 727	SS 5765(s)	KT 783	SS 3479(s) 3559		
KT 729	SS 9428	KT 785	SS 5996		

KT 788	SS 4191(s)	KT 1421	SS 5044(s)
KT 588	SS 1432(s)	KT 841	SS 11085
KT 1681	SS 6099(s)	KT 842	SS 11309
KT 790	SS 5445, 4815(s)	KT 843	SS 225(s)
KT 792	SS 3143(s)	KT 849	SS 5184(s)
KT 795	SS 5475(s)	KT 856	SS 4149(s)
KT 796	SS 9538(s)	KT 857	SS 9024
KT 797	SS 4583(s) 8166	KT 865	SS 7042
KT 798	SS 1821	KT 871	SS 3715(s), 5964
KT 804	SS 13099, 12301, 5426(s)	KT 870	SS 5935
KT 804	SS 1908(s), 4033(s)	KT 869	SS 6190(s)
KT 810	SS 6492	KT 874	SS 1629(s)
KT 812	SS 3846(s)	KT 873	SS 4424, 4440(s)
KT 815	SS 1043(s)	KT 1414	SS 6629
KT 817	SS 9445	KT 1415	SS 5981(s)
KT 818	SS 6094(s)	KT 876	SS 4304(s)
KT 822	SS 5319(s)	KT 878	SS 6176(s)
KT 823	SS 823(s)	KT 879	SS 2231(s)
KT 826	SS 4193(s)	KT 1576	SS 4757(s)
KT 828	SS 5314(s)	KT 1419	SS 2823(s)
KT 829	SS 2597(s)	KT 883	SS 4845(s)
KT 1603	SS 6109(s)	KT 884	SS 801(s) 7669
KT 831	SS 4334(s) 11740	KT 886	SS 1583(s)
KT 833	SS 9760	KT 887	SS 2187(s)

5

KT 871	SS 5507(s)		KT 942	SS 3817
KT 900	SS 6985, 8700	18. II 54	KT 944	SS 5621(s)
KT 901	SS 9722 (?)		KT 950	SS 1126(s)
KT 903	SS 3742(s), 5702(s)		KT 951	SS 539(s)
KT 906	SS 4811(s)		KT 954	SS 2301(s)
KT 909	SS 172(s)		KT 956	SS 3146(s)
KT 911	SS 4155(s)		KT 957	SS 4698(s)
KT 912	SS 4836(s)		KT 959	SS 4681(s)
KT 913	SS 4990(s)		KT 961	SS 2249(s), 4036(s)
KT 917	SS 5597(s)		KT 965	SS 4480(s)
KT 1631	SS 3838(s)		KT 966	SS 2878, 4709(s)
KT 921	SS 3768, 131(s)		KT 973	SS 9326
KT 922	SS 6023(s)		KT 975	SS 3115(s)
KT 1554	SS 4925(s)		KT 977	SS 7174, 4392(s)
KT 1555	SS 8509		KT 982	SS 650, 3107(s)
KT 1559	SS 4333(s)		KT 987	SS 4720(s) 8908 (the end of the stamp clay on the handle)
KT 1560	SS 4350(s)		KT 993	SS 3275(s)
KT 923	SS 3467(s)		KT 998	SS 2786
KT 924	SS 2866(s) 4569		KT 999	SS 5725 (?)
KT 926	SS 366(s)		KT 996	SS 347(s)
KT 927	SS 2080(s)		KT 1000	SS 5796
KT 934	SS 2259		KT 1004	SS 5307(s)
KT 936	SS 6118(s)		KT 1005	SS 5920(s)
KT 937	SS 3010(s)		KT 1729	SS 672(s)
KT 940	SS 12632			

KT 1013	SS 223(s) 2513(s)	KT 1069	SS 169(s)
KT 1014	SS 4201(s)	KT 1070	SS 8901
KT 1015	SS 11301	KT 1072	SS 6097(s)
KT 1019	SS 19745	KT 1074	SS 5369(s)
KT 1021	SS 3718(s)	KT 1079	SS 276(s) 7480
KT 1022	SS 3529(s)	KT 1082	SS 3988(s)
KT 1024	SS 1148(s) 6101	KT 1084	SS 4152(s)
KT 1025	SS 5135(s)	KT 1089	SS 4539(s)
KT 1026	SS 3052(s) 4854	KT 1086	SS 1430(s)
KT 1029	SS 4856(s) 3406, 6712	KT 1087	SS 4420(s)
KT 1032	SS 1424(s)	KT 1089	SS 2748(s)
KT 1036	SS 3222(s)	KT 1090	SS 4584(s)
KT 1037	SS 3965(s)	KT 1094	SS 4108(s)
KT 1041	SS 6086(s)	KT 1097	SS 3279(s)
KT 1040	SS 6078(s)	KT 1099	SS 6152(s)
KT 1042	SS 6805, 6793	KT 1105	SS 10799, 2576(s)
KT 1044	SS 153(s)	KT 1107	SS 1306(s)
KT 1050	SS 5194(s) 4305(s)	KT 1110	SS 2077, 4381(s)
KT 1056	SS 4417(s)	KT 1111	SS 1998(s)
KT 1055	SS 5833, 279(s), 6603	KT 1112	SS 3103(s)
KT 1058	SS 9177	KT 1114	SS 6566, 9590
KT 1059	SS 1968(s)	KT 1115	SS 5978(s)
KT 1062	SS 4945(s)	KT 1117	SS 1070(s) 9047
KT 1067	SS 6121(s)	KT 1126	SS 3698? (no picture on card but had a sample)
KT 1068	SS 5938(s)		

(6)

KT 1129	SS 4051(s), 8982	KT 1182	SS 5832(s)
KT 1130	SS 5509(s)	KT 1183	SS 64(s)
KT 1133	SS 8558, 5755(s) ^{minimum} _{year}	KT 101	SS 3352(s) 8113(s)
KT 1135	SS 5929(s)	KT 1192	SS 3059(s)
KT 1142	SS 3276(s), 8101	KT 1193	SS 4712(s) 9220
KT 1143	SS 1764(s)	KT 1194	SS 4873(s)
KT 1144	SS 81(s)	KT 1195	SS 3317(s)
KT 1151	SS 7253(s) 22.7.59	KT 1198	SS 3031(s), 11067
KT 1154	SS 4000(s)	KT 1199	SS 5568(s) 10217?
KT 1639	SS 4581, 5008(s)	KT 1201	SS 4002(s)
KT 1640	SS 7153	KT 1204	SS 3334(s)
KT 1641	SS 6215(s)	KT 1208	SS 3014(s)
KT 1156	SS 5983(s)	KT 1211	SS 4905
KT 1154	SS 1457(s)	KT 1215	SS 6095(s)
KT 1160	SS 1573(s)	KT 1222	SS 5425(s)
KT 1161	SS 8103(s) 8110	KT 1225	SS 5373(s)
KT 1163	SS 3938(s)	KT 1226	SS 5967(s)
KT 1429	SS 4053(s) ?	KT 1224	SS 5339(s)
KT 1168	SS 791(s)	KT 1733	SS 3035(s)
KT 1170	SS 2580(s)	KT 1458	SS 5807(s)
KT 1174	SS 8215	KT 1460	SS 4169
KT 1175	SS 195(s)	KT 1233	SS 5594(s)
KT 1188	SS 6159(s)	KT 1234	SS 5610
KT 1178	SS 3743(s)	KT 1648	SS 1412(s)
KT 1179	SS 9815		

KT 1649	SS 1743(s)	KT 1743	SS 2719(s)
KT 1239	SS 12438	KT 1537	SS 10895
KT 1240	SS 2689(s)	KT 1748	SS 1077(s)
KT 1241	SS 10215	KT 1758	SS 6101(s)
KT 1245	SS 776, 2550(s)	KT 1637	SS 2102(s)
KT 1250	SS 5427	KT 1636	SS 4866(s), 5230
KT 1252	SS 313(s)	KT 1429	SS 3550(s)
KT 1474	SS 5011(s)	KT 1570	SS 4318(s)
KT 1475	SS 807(s)	KT 1567	SS 1924
KT 1738	SS 1104(s)	KT 1763	SS 5818(s)
KT 1264	SS 9653	KT 1765	SS 2624(s)
KT 1265	SS 2924(s), 3349(s)	KT 1490	SS 202(s), 5782
KT 1268	SS 4398(s)	KT 1539	SS 3322(s)
KT 1269	SS 5308(s)	KT 1526	SS 4759(s)
KT 1271	SS 8655	KT 1606	SS 5047(s) 8719
KT 1274	SS 3117(s)	KT 1766	SS 2691(s)
KT 1276	SS 4516(s) 8792	KT 1767	SS 715(s)
KT 1278	3310(s), 7839, 10226	KT 1359	SS 2948(s)
KT 1281	SS 5277	KT 1598	SS 4328(s)
KT 1739	SS 5955(s)	KT 1295	SS 3488(s)
KT 1497	SS 8163	KT 1540	SS 302(s)
KT 1643	SS 4646(s)	KT 1519	SS 314(s) 3740(s)
KT 1742	SS 1851(s)	KT 1613	SS 5866(s)
KT 1619	SS 2264(s)	KT 1531	SS 10700
		KT 1541	SS 4820(s)

(7)

KT 1492	SS 5359(s)	KT 1472	SS 3342(s)
KT 1542	SS 5834(s) 8279	KT 1783	SS 2603
KT 1589	SS 4403(s)	KT 1782	SS 2451(s)
KT 1473	SS 2914(s)	KT 1784	SS 282(s), 9595
KT 1769	SS 3678(s)	KT 1799	SS 1099(s)
KT 1615	SS 8724, 10577	KT 1601	SS 2716(s)
KT 1511	SS 3353(s), 5147(s)	KT 1646	SS 3385(s), 6556
KT 1532	SS 278(s)	KT 1647	SS 2935(s)
KT 1500	SS 4410(s), 4818(s)	KT 1623	SS 3017(s) 9611 (?)
KT 1482	SS 4919(s), 5275	KT 1653	SS 6027(s), 10326
KT 1483	SS 1944	KT 1695	SS 326(s)
KT 1652	SS 2943(s)	KT 1789	SS 5164(s)
KT 1621	SS 10099	KT 1390	SS 1209(s)
KT 1317	SS 3468(s)	KT 1691	SS 2899(s)
KT 1484	SS 5659(s)	KT 1422	SS 5691(s)
KT 1776	SS 4227(s)	KT 1502	SS 6082(s)
KT 1456	SS 5251(s)	KT 1501	SS 2665(s), 5242(s), 7476
KT 1568	SS 3477(s)	KT 1510	SS 5306
KT 1778	SS 3082(s)	KT 1591	SS 4578(s)
KT 1423	SS 5517(s)	KT 1798	SS 2527(s)
KT 1431	SS 406(s)	KT 1505	SS 3531(s)
KT 1432	SS 986(s)	KT 1802	SS 3038(s)
KT 1433	SS 11730, SS 12170	KT 1528	SS 5726(s)
KT 1454	SS 7654(s) 9640	KT 1642	SS 1776(s)

KT 1549	SS 2808 (s)	KT 1360	SS 3725 (s)
KT 1548	SS 1794 (s)	KT 1420	SS 3283 (s)
KT 1337	SS 5890 (s)	KT 1428	SS 6974
KT 1342	SS 1951 (s)	No KT	SS 4407 / head picture
KT 1412	SS 2532 (s)	KT 1471	SS 9088
KT 1416	SS 802 (s)	KT 1476	SS 2367 (s)
KT 1400	SS 4133 (s) 8630 ⁶	KT 1477	SS 3208
KT 1427	SS 5026 (s) 8310	KT 1663	SS 2044 (s)
KT 1044	SS 2903 (s)		
KT 1408	SS 2835 (s) 7339		
KT 1402	SS 1819 (s)		
KT 1470	SS 10107		
KT 1426	SS 9569		
KT 168	SS 5072 (s)		
KT 163	SS 6166 (s)		
KT 167	SS 6890, 7997		
KT 166	SS 2439 (s)		
KT 1293	SS 7324		
KT 1663	SS 2709 (s) 4478		
KT 1296	SS 9.75 (s)		
KT 696	SS 5967 (s)		
KT 1303	SS 5569 (s)		
KT 1332	SS 309 (s)		
KT 1334	SS 2036 (s)		

KT NUMBERING — 'KT CHECK

597